



Northchurch Road, N1

£650 Per week

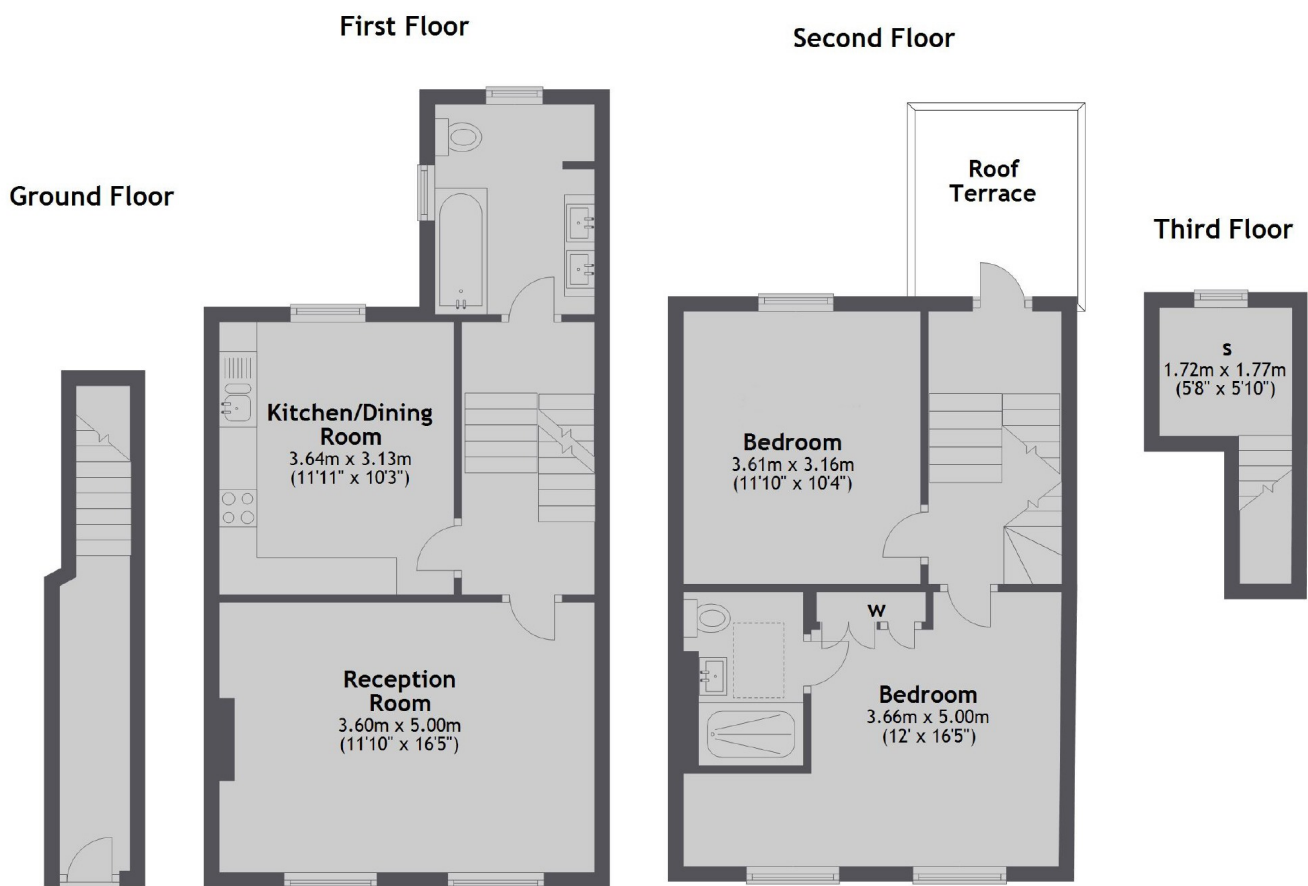
This three bedroom upper maisonette is set over three floors with large bedrooms and has been fully refurbished throughout. It has a private terrace and two bathrooms (one ensuite), an additional study room and is available furnished.

Northchurch Road is close to a wide range of transport amenities including Essex Road Station (National Rail), Angel Station (Northern Line) and Highbury & Islington Station (Victoria and Overground).

Features

- Three Double Bedrooms
- Period Maisonette
- Private South Facing Terrace
- Two Bathrooms
- Eat-In Kitchen
- Close to Transport Links

Northchurch Road, London, N1



Main area: Approx. 89.4 sq. metres (962.2 sq. feet)
Plus roof terrace, approx. 5.7 sq. metres (61.3 sq. feet)

Contact

To arrange a viewing call our office on the number below or visit our website.



Energy Rating: D. We aim to make our particulars both accurate and reliable. However they are not guaranteed; nor do they form part of an offer or contract. If you require clarification on any points then please contact us, especially if you're traveling some distance to view. Please note that appliances and heating systems have not been tested and therefore no warranties can be given as to their good working order.