



Essex Road, N1

£600 Per week

Split over three levels and benefiting from a landscaped private garden, this three bedroom conversion is in an attractive and grand period property on a pretty crescent set back from Essex Road.

Close to a wide range of transport amenities, with the restaurants and shopping district of Islington's Upper Street within easy reach.

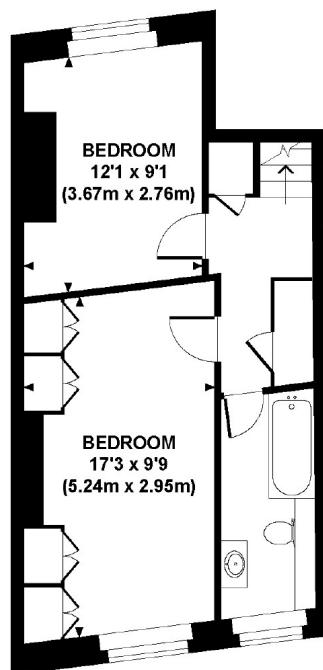
Features

- Three Bedrooms
- Beautiful Period Property
- Large Private Garden
- Open Plan Reception Room
- Wood Floors Throughout
- Close to Transport

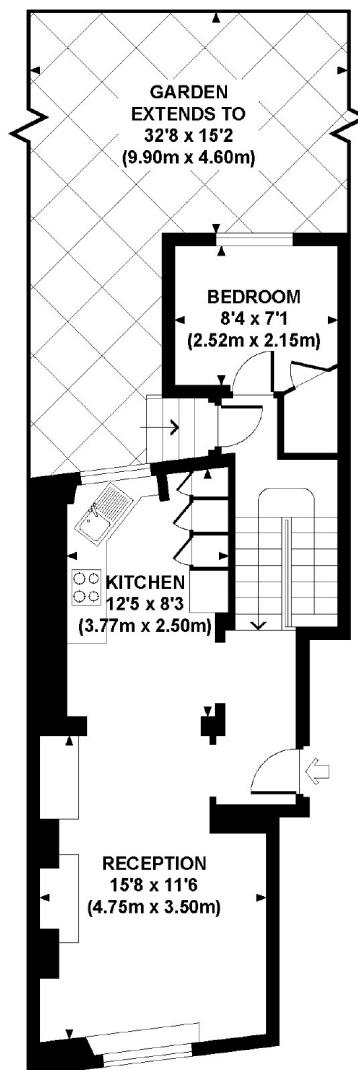
Essex Road, London, N1

ESSEX ROAD, N1

Approx. gross internal area
843 Sq Ft / 78.3 Sq M.
Representation of current layout.
Not to scale.



LOWER GROUND FLOOR



GROUND FLOOR

Contact

To arrange a viewing call our office on the number below or visit our website.



Energy Rating: D. We aim to make our particulars both accurate and reliable. However they are not guaranteed; nor do they form part of an offer or contract. If you require clarification on any points then please contact us, especially if you're traveling some distance to view. Please note that appliances and heating systems have not been tested and therefore no warranties can be given as to their good working order.