



Esther Anne Place, N1

£950 Per week

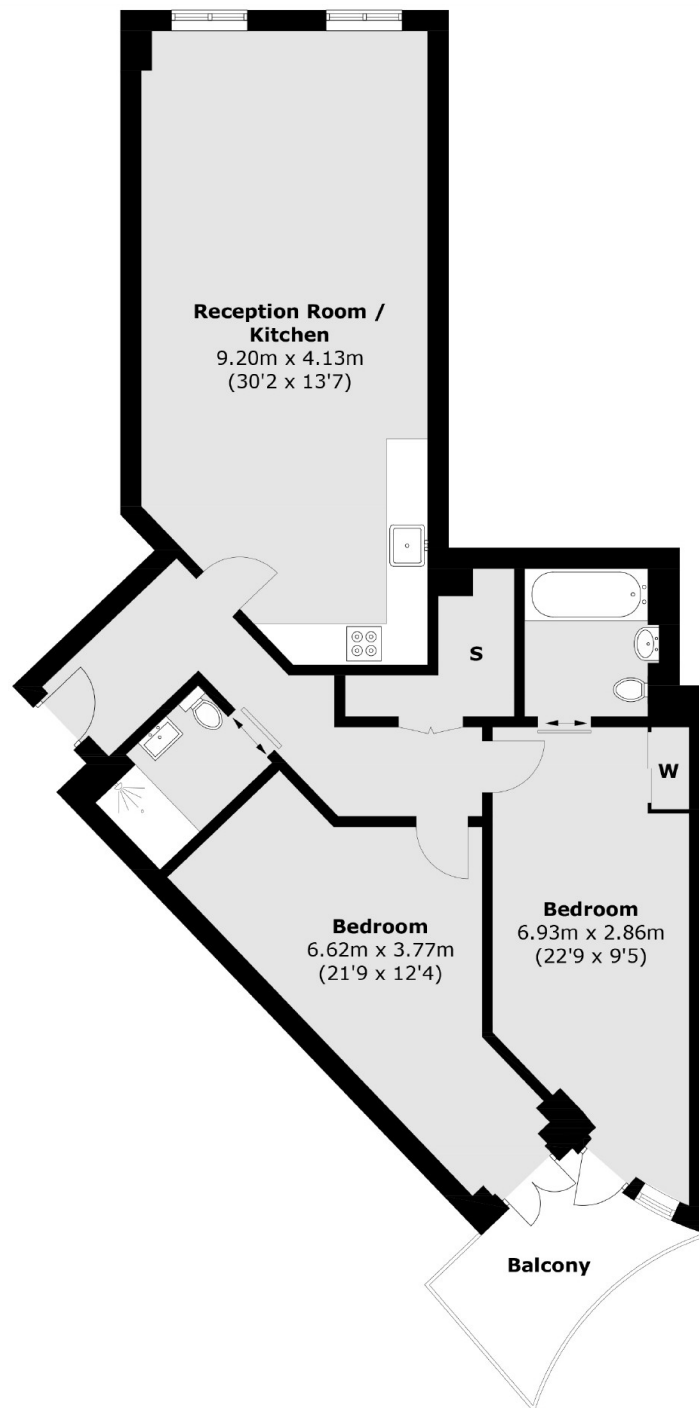
A stunning brand new two bedroom apartment in the Islington Square development with a spacious living room and modern open plan kitchen, two luxury bathrooms and a private balcony.

Esther Anne Place is part of the brand new Islington Square development and is located just off of the vibrant Upper Street with an array of shops, restaurants, cafes and nightlife and is less than half a mile from Angel and Highbury & Islington stations.

Features

- Brand New Development
- 24 Hour Concierge
- Private Balcony
- Two Double Bedrooms
- Two Bathrooms
- Communal Roof Gardens

Esther Anne Place, London, N1



Total area (approx.): 92.8 sq. m (999 sq. ft)
Balcony area (approx.): 6.1 sq. m (66 sq. ft)

Dexters

Islington
76 Upper Street
London
N1 0NU
Lettings
020 7483 6374

Energy Rating: B. We aim to make our particulars both accurate and reliable. However they are not guaranteed; nor do they form part of an offer or contract. If you require clarification on any points then please contact us, especially if you're traveling some distance to view. Please note that appliances and heating systems have not been tested and therefore no warranties can be given as to their good working order.

 **RICS** | Regulated
Estate Agent
and Letting Agent

[dexters.co.uk](https://www.dexters.co.uk)