



Arlington Square, N1

£1,800 Per week

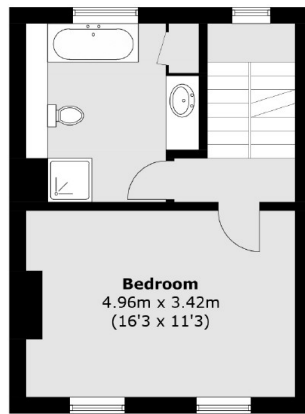
An exceptional four bedroom period house with a private garden, roof terrace and original features throughout. Finished to a high standard, this will make the perfect home for a family in the heart of Islington.

Arlington Square is a hidden gem, conveniently located for Angel Station and Highbury & Islington. Islington's Upper Street is also close by with its abundance of shops, cafes, restaurants and bars.

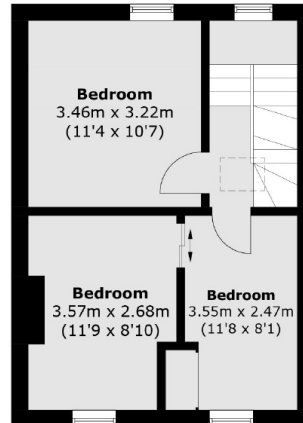
Features

- Four Bedrooms
- Three Bathrooms
- Private Garden
- Original Period Features
- Terrace
- Modern Interior

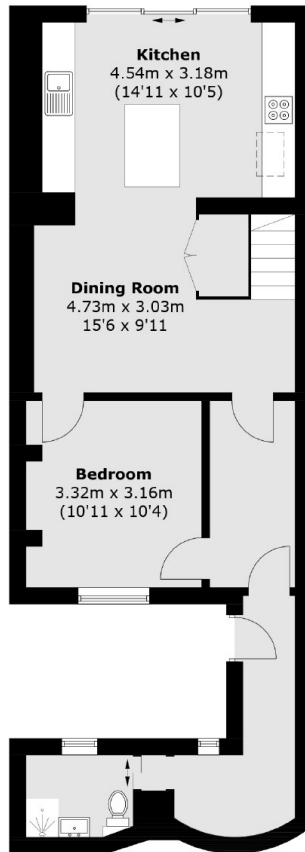
Arlington Square, London, N1



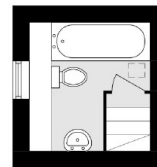
First Floor



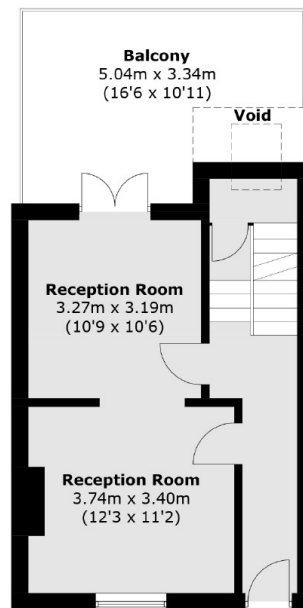
Second Floor



Lower Ground Floor



Third Floor



Ground Floor

Total area (approx.): 167.2 sq. m (1,799.7 sq. ft)
(Excluding Void)
Balcony area (approx.): 14.3 sq. m (153.9 sq. ft)