



## Liverpool Road, N1

£4,150 Per week

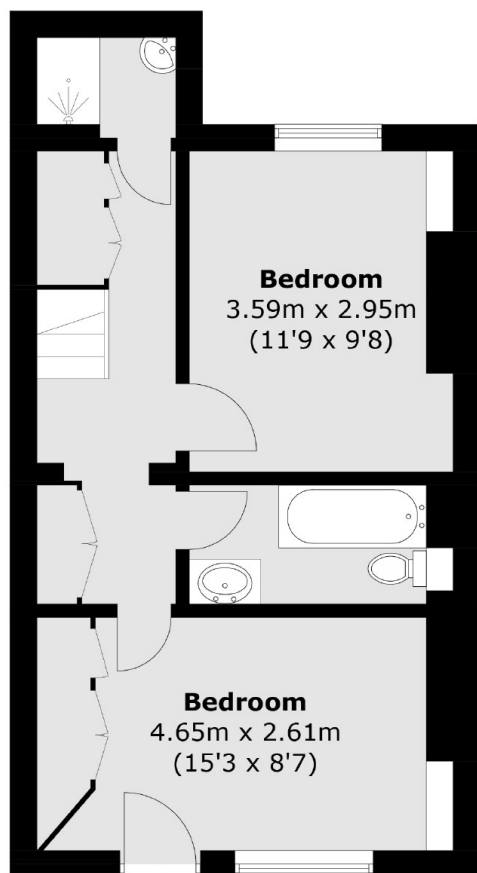
A charming two bedroom property on Liverpool Road. This property is split over two levels with an open plan kitchen reception room with bay windows, wood flooring and a country style kitchen with a spacious private garden. There are two double bedrooms and two bathrooms with ample storage and access to a separate patio from the master bedroom.

Liverpool Road is located in the heart of Angel a short walk away from Angel Underground Station and all the amenities of Upper Street. Residents can enjoy a huge selection of shops, cafe's, restaurants and bars in close proximity whilst being on a tree lined residential road.

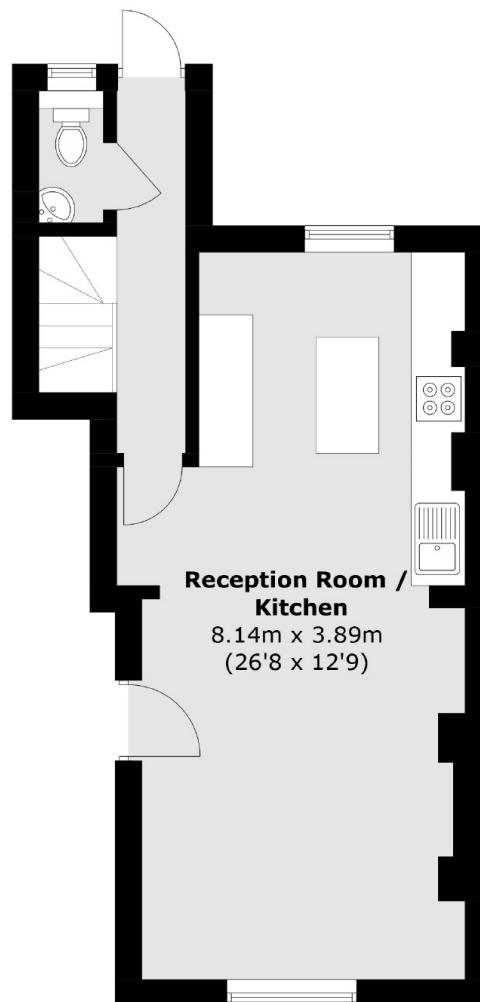
### Features

- Two Bedroom
- Garden
- Period Conversion
- Two Bathroom
- Open Plan
- Wood Flooring

# Liverpool Road, London, N1



**Lower Ground Floor**



**Ground Floor**

Total area (approx.): 73.5 sq. m (791.1 sq. ft)