



Ecclesbourne Road, N1

£2,600 Per week

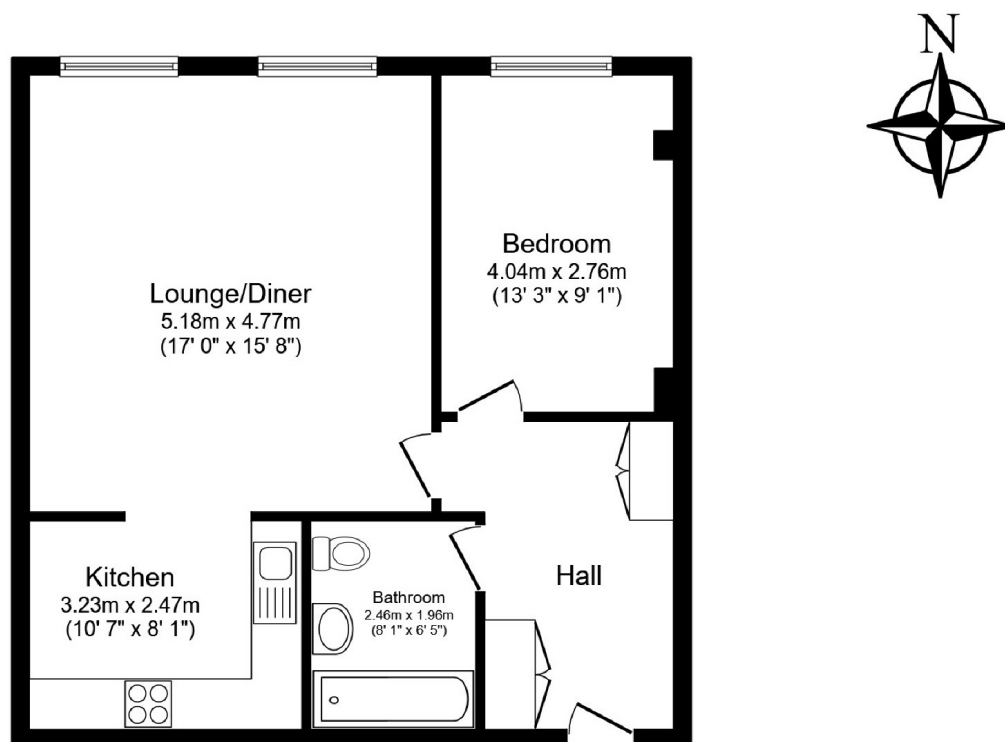
A spacious one bedroom apartment within a school conversion in a private gated development. This apartment is presented immaculately with a large open plan kitchen living space, double bedroom and modern bathroom. This apartment has lots of natural light, double height ceilings and wooden flooring throughout adding to its charm and attractiveness.

Ecclesbourne Road is conveniently located offering easy access to Essex Road, Highbury and Islington and Angel Station. The amenities of De Beauvoir and Upper Street are also a short walk away for residents.

Features

- Large One Bedroom
- School Conversion
- Modern Kitchen
- Spacious Bathroom
- Gated Development
- Double Height Ceilings

Ecclesbourne Road, London, N1



Total floor area 59.1 m² (636 sq.ft.) approx

This floor plan is for illustrative purposes only. It is not drawn to scale. Any measurements, floor areas (including any total floor area), openings and orientation are approximate. No details are guaranteed, they cannot be relied upon for any purpose and they do not form part of any agreement. No liability is taken for any error, omission or misstatement. A party must rely upon its own inspection(s). Powered by www.focalagent.com