



Rees Street, N1

£1,150,000

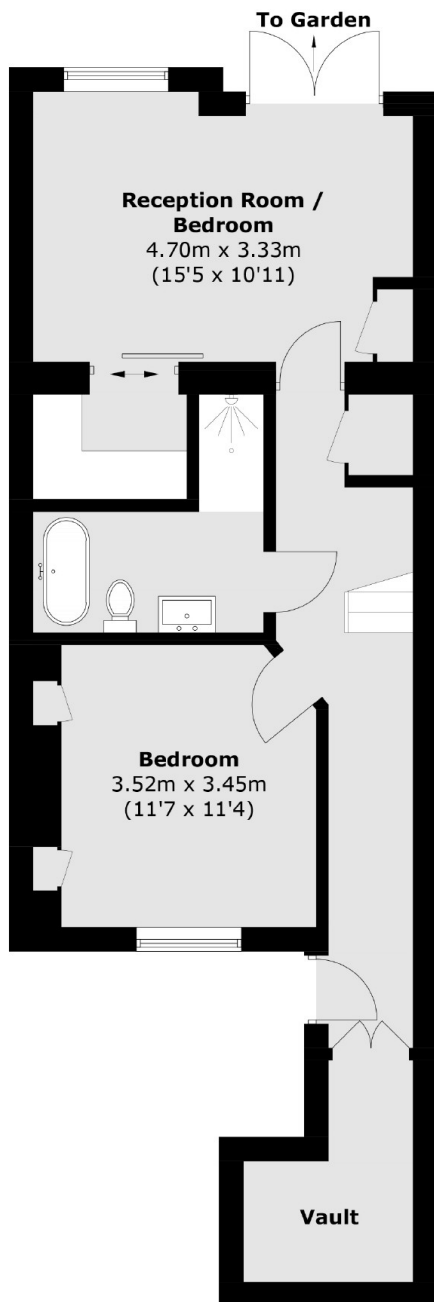
This beautifully presented two double bedroom Victorian maisonette is set within the Arlington Conservation area. Light and airy this home is arranged over two floors and benefits from a private entrance, wooden floors, large private garden, roof terrace and a separate kitchen and living area.

There are excellent transport links available at Angel underground station (Northern line) and Highbury & Islington (Victoria and London Overground lines). The City is easily accessible and nearby bus routes run directly to London Bridge, Waterloo Station, Kings Cross, Euston and the West End. The property also benefits from being a short walk from Regents Canal.

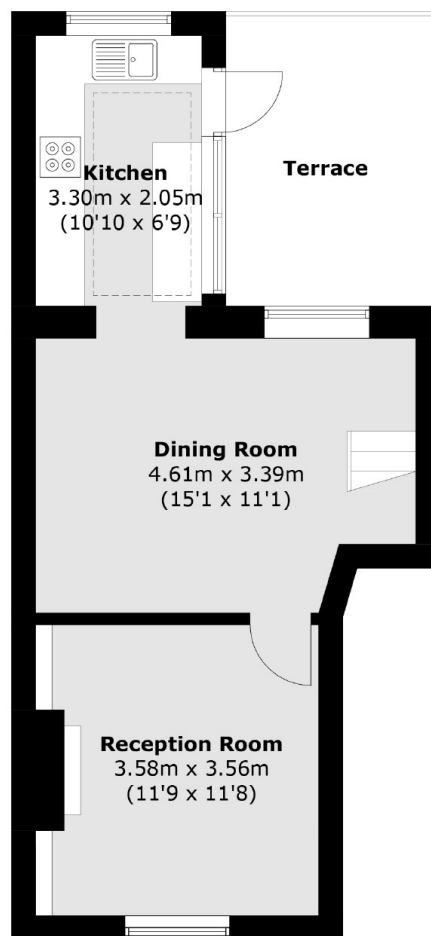
Features

- Share of the Freehold
- Private Garden
- Two Double Bedrooms
- Victorian Conversion

Rees Street,
London, N1



Lower Ground Floor



Raised Ground Floor

Total area (approx.): 85.3 sq. m (923.5 sq. ft)
Vault (approx.): 4.5 sq. m (48.4 sq. ft)
Terrace area (approx.): 9.7 sq. m (104.4 sq. ft)

Dexters

Islington
76 Upper Street
London
N1 0NU
Sales
020 7483 6373

Energy Rating: TBC. We aim to make our particulars both accurate and reliable. However they are not guaranteed; nor do they form part of an offer or contract. If you require clarification on any points then please contact us, especially if you're traveling some distance to view. Please note that appliances and heating systems have not been tested and therefore no warranties can be given as to their good working order.

 **RICS** | Regulated
Estate Agent
and Letting Agent

dexters.co.uk