



Rees Street, N1

£1,150,000

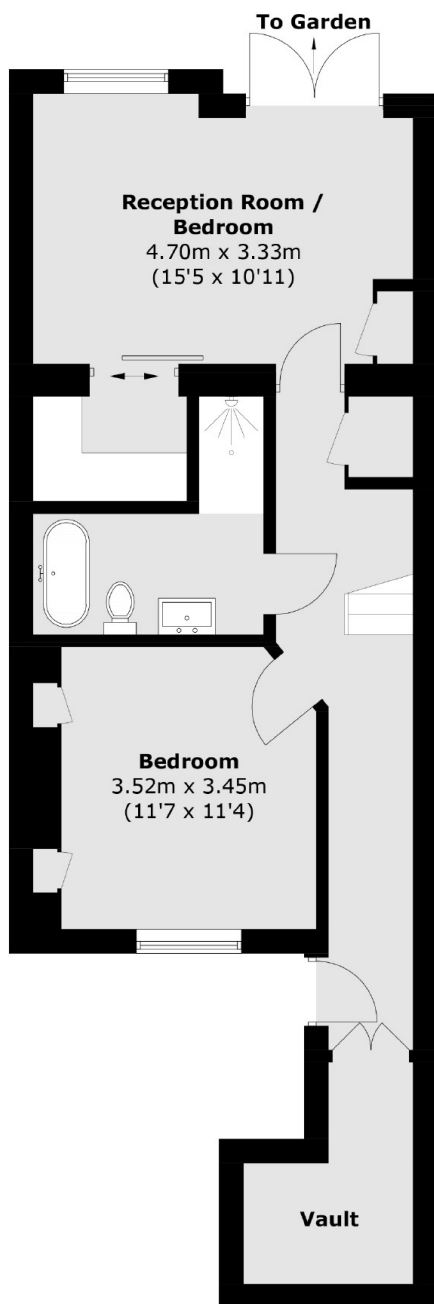
This beautifully presented two double bedroom Victorian maisonette is set within the Arlington Conservation area. Light and airy this home is arranged over two floors and benefits from a private entrance, wooden floors, large private garden, roof terrace and a separate kitchen and living area.

There are excellent transport links available at Angel underground station (Northern line) and Highbury & Islington (Victoria and London Overground lines). The City is easily accessible and nearby bus routes run directly to London Bridge, Waterloo Station, Kings Cross, Euston and the West End. The property also benefits from being a short walk from Regents Canal.

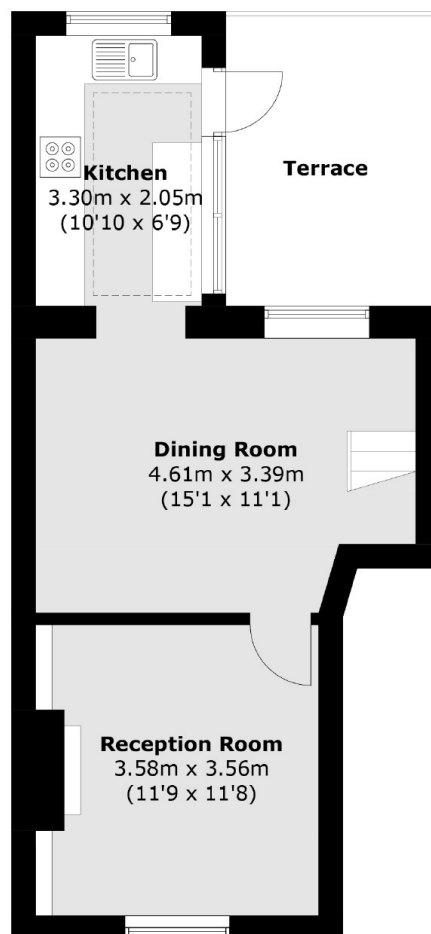
Features

- Share of the Freehold
- Private Garden
- Two Double Bedrooms
- Victorian Conversion

Rees Street, London, N1



Lower Ground Floor



Raised Ground Floor

Total area (approx.): 85.3 sq. m (923.5 sq. ft)
Vault (approx.): 4.5 sq. m (48.4 sq. ft)
Terrace area (approx.): 9.7 sq. m (104.4 sq. ft)