

## Morton Road, N1

£2,750 Per week

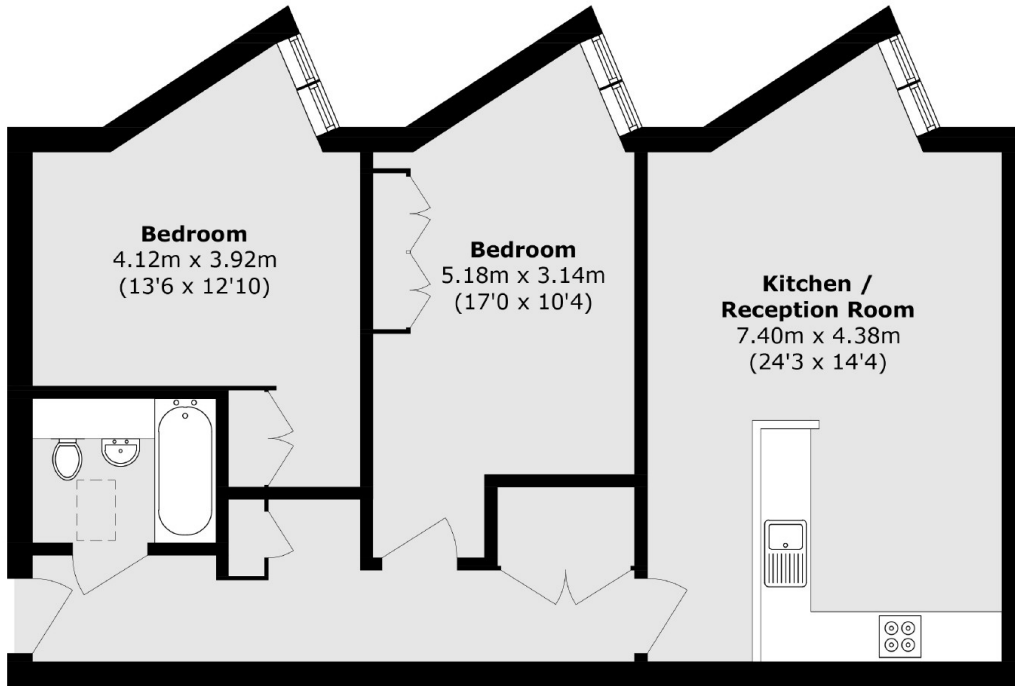
A modern two double bedroom apartment in a private gated development. The property consists of open plan kitchen living space and wooden flooring throughout.

Morton Road is conveniently located offering easy access to Essex Road, Highbury and Islington and Angel Station. The amenities of De Beauvoir and Upper Street are also a short walk away for residents.

### Features

Two Double Bedroom  
Gated Development  
Wooden flooring Throughout  
Open Plan Living Space  
Fantastic Location  
Available Now

# Morton Road, London, N1



Total area (approx.): 76.1 sq. m (819.1 sq. ft)