



Copenhagen Street, N1 £885,000

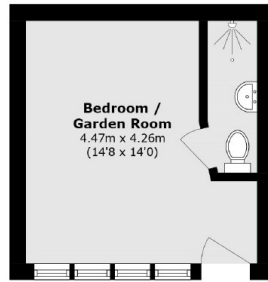
Located in a small block of only six flats, this large five bedroom flat is split over two levels is being offered chain free. One bedroom is located separate to the block in the garden with an en-suite. The property benefits from an open plan kitchen reception with south facing French Doors that lead onto a private garden.

The Rambler Building is located on Copenhagen Street, nearest tube stations being Kings Cross (various lines) & Angel (Northern line) and close to local bus services, shops, Kings Cross rail stations, St Pancras Eurostar services, the Regents canal, Granary Square & the shops and restaurants of Coal Drops Yard.

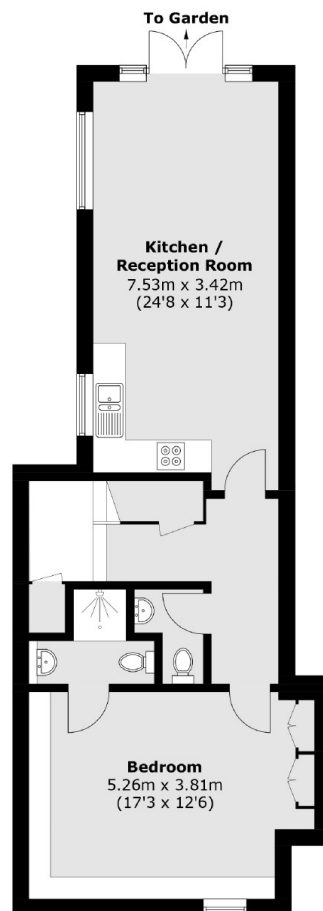
Features

- Five Bedrooms
- Four Bathrooms + W/C
- Split Level
- Private South Facing Garden
- Small Development

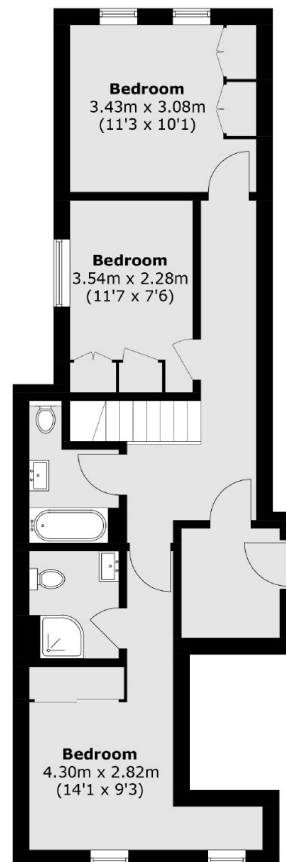
Copenhagen Street, London, N1



Ground Floor



Lower Ground Floor



Ground Floor

Total area (approx.): 116.9 sq. m (1,258.3 sq. ft)
(Excluding Outbuilding)
Outbuilding area (approx.): 19.0 sq. m (204.5 sq. ft)