



Almeida Street, N1

£6,000 Per week

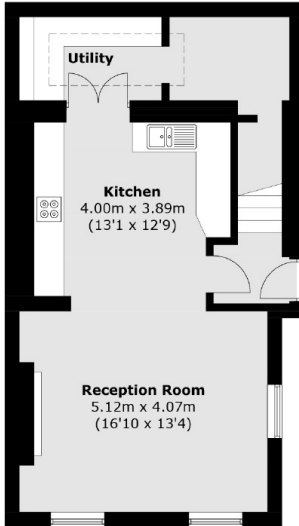
A beautifully presented end-of-terrace period home, situated on the prestigious Almeida Street, just moments away from Upper Street in Islington. The house comprises five bedrooms, three bathrooms, a double reception room, a generously sized open kitchen and dining area and a retractable garage door allowing off-street parking for two cars.

Almeida Street is located just off of the vibrant Upper Street with an array of shops, restaurants, cafes and nightlife and is less than half a mile from Angel and Highbury & Islington stations.

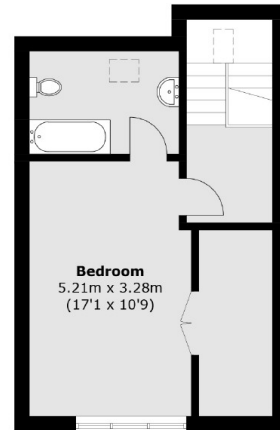
Features

- Five Bedrooms
- End Of Terrace
- Off Street Parking
- Period Features
- Unfurnished
- Family Home

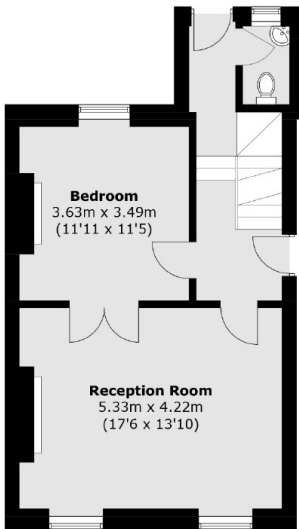
Almeida Street, London, N1



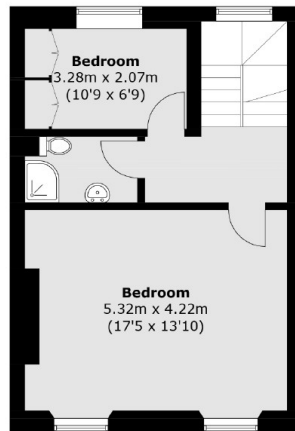
Lower Ground Floor



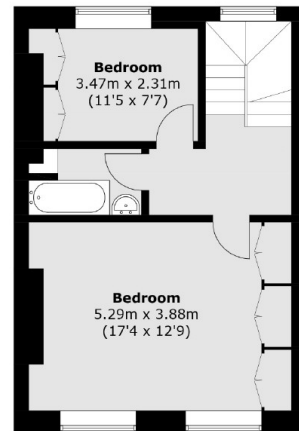
Third Floor



Ground Floor



First Floor



Second Floor

Total area (approx.): 221.1 sq. m (2,379.7 sq. ft)