

## Drummond Way, N1

### £825,000

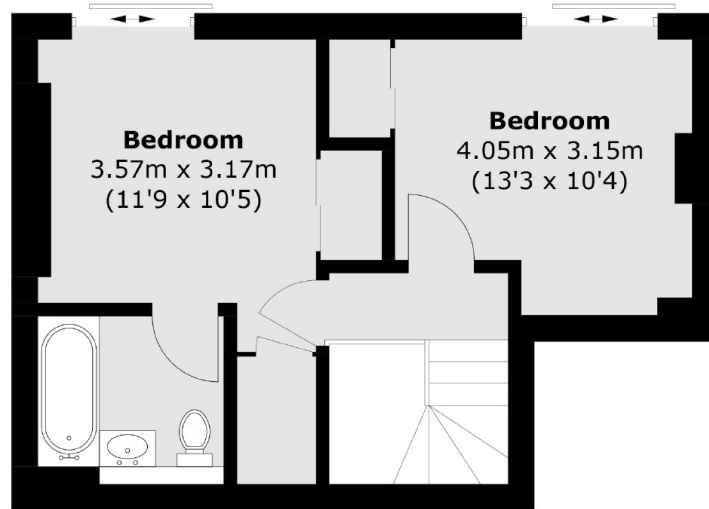
A two bedroom apartment in a converted school in Barnsbury. This modern second and third floor flat is set in a gated development with on site concierge.

Both Highbury & Islington and Caledonian Road & Barnsbury Stations are less than half a mile away, providing access to the Victoria, Overground and National Rail Lines. The shops, bars and restaurants of Islington's Upper Street are also within easy reach.

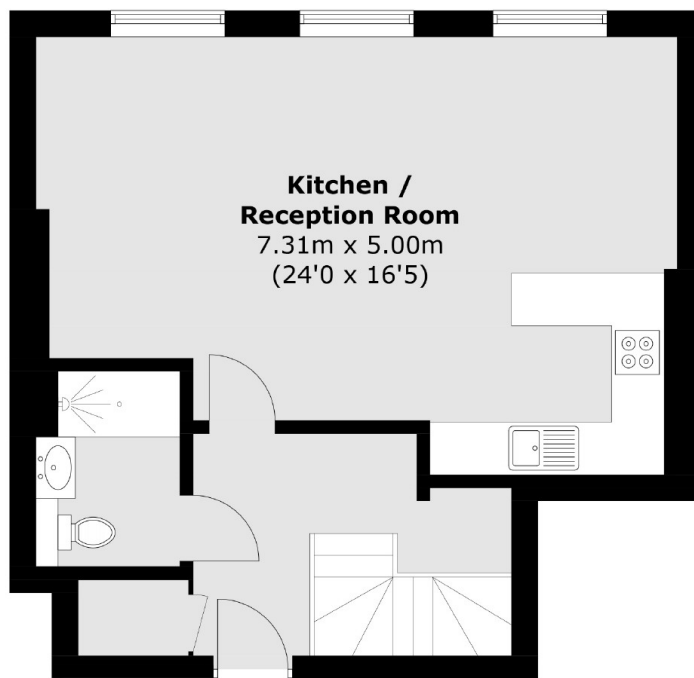
### Features

- Two Bedrooms
- School Conversion
- Concierge
- Gated Development
- Split Level
- Two Bathrooms

# Drummond Way, London, N1



**Mezzanine Floor**



**Second Floor**

Total area (approx.): 81.7 sq. m (879.4 sq. ft)