



## Sterling Way, N7

£675,000

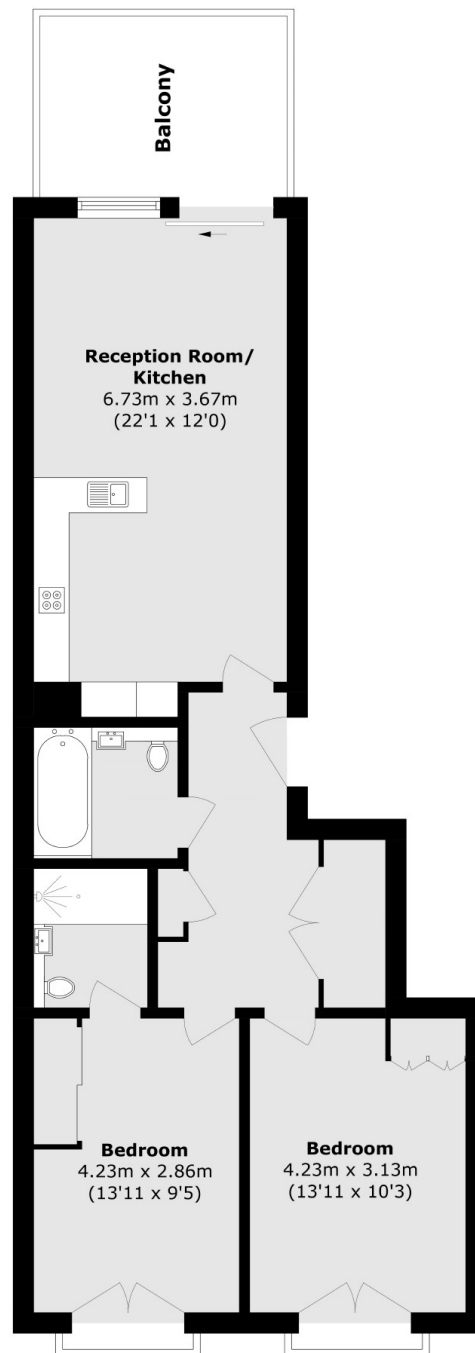
An immaculately presented, two bedroom, two bathroom apartment within a modern development. Located on the third floor, this home has an open plan kitchen/living room which leads directly out to a private balcony, as well as benefitting from lift service, triple glazed windows and a 24hr concierge.

Excellently located for transport links with Caledonian Road tube (Piccadilly) and Caledonian Road and Barnsbury (Mildmay Line) stations both around a quarter of a mile away, as well as being around a mile from Kings Cross Station and the exciting new development, Coal Drops Yard. For green space, Market Road Gardens and Caledonian Park are just around the corner.

### Features

- Two Double Bedrooms
- Large Private Balcony
- Lift Access
- Ample Fitted Storage
- Bike Storage
- Shared Garden

# Sterling Way, London, N7



Total area (approx.): 73.0 sq. m (785.7 sq. ft) (Excluding Balcony)

Balcony area (approx.): 9.4 sq. m (101.1 sq. ft)