



Mildmay Grove South, N1

£5,000 Per calendar month

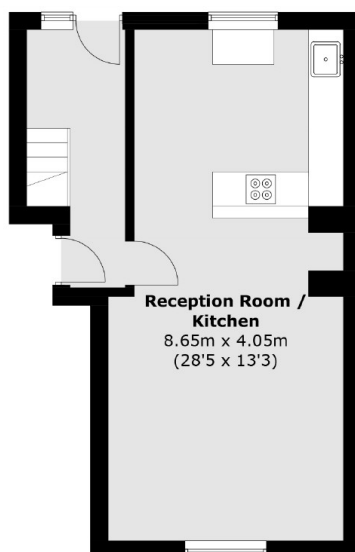
A beautifully maintained three bedroom duplex refurbished to a high specification throughout benefiting from high ceilings, large sash windows and original period features with a private garden.

Mildmay Grove South is located within easy reach of the amenities of both Stoke Newington Church Street and Islington while providing motorists with quick and easy access to the A1 road links out of London and to the North.

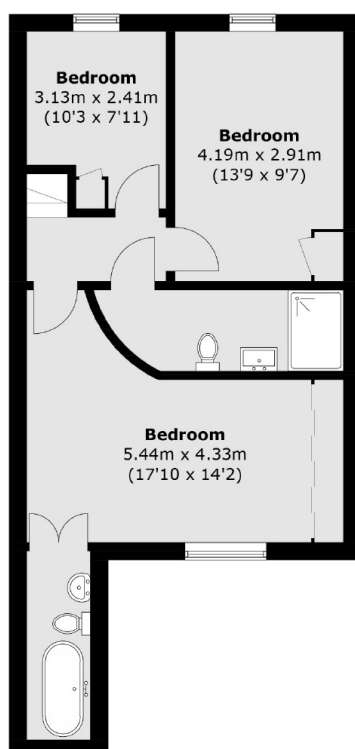
Features

Recently Refurnished
High Spec Throughout
Large Private Garden
Split Level
Wooden Floors Throughout
Great Location

Mildmay Grove South, London, N1



Ground Floor



Lower Ground Floor

Total area (approx.): 92.8 sq. m (998.8 sq. ft)