



Essex Road, N1

£1,395,000

A unique two/three bedroom early Georgian conversion apartment on two floors with nearly 1,500 sq ft of beautiful and grand living accommodation. Occupying an enviable position in the heart of central Islington, the property is moments from the vibrant array of food shops, independent stores, restaurants, cafés and outstanding venues on Essex Road, Upper Street and the surrounding streets.

The property is perfectly positioned for central Islington, Hoxton, Shoreditch and Old Street. Residents enjoy outstanding connectivity with Angel, Essex Road, and Highbury & Islington stations all within close proximity, ensuring seamless travel across the capital. The start of New River is opposite the apartment, Shoreditch Park, Regent's Canal and Highbury Fields and Islington Green are within 10 minutes walk, providing peaceful oasis amidst the energy of this sought-after neighbourhood which perfectly balances convenience and vibrant city living.

Features

- Two Bedrooms
- Separate Study
- Georgian Conversion
- Split Level
- Private Garden
- Beautiful Original Features



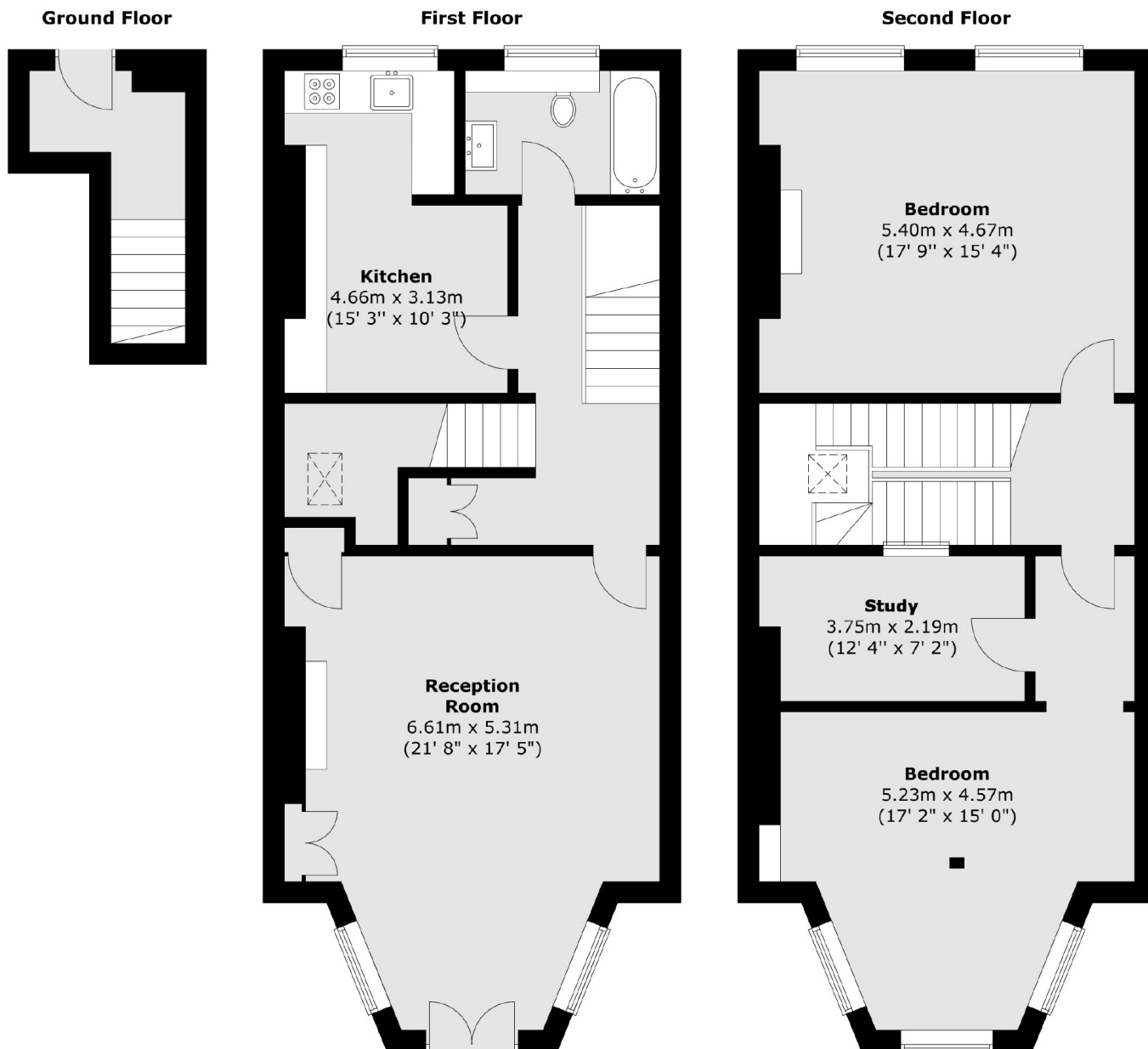
Essex Road, N1

The entrance to the flat is tucked away on a tranquil side street. You enter through the private patio at the rear of the property which is perfect for relaxation or entertaining. The apartment is the sole occupant and the private entrance leads up to the first floor with a grand reception room, kitchen and family bathroom, with many original features and considerable natural light throughout. The generous hallway gives storage and additional space and light.

The top floor comprises two generous and bright double bedrooms with the principal bedroom overlooking the rear courtyard garden. There is also a study/third bedroom.



Essex Road, London, N1



Total area (approx.) : 138.8 sq. m (1494 sq. ft)