



Essex Road, N1

£1,000,000

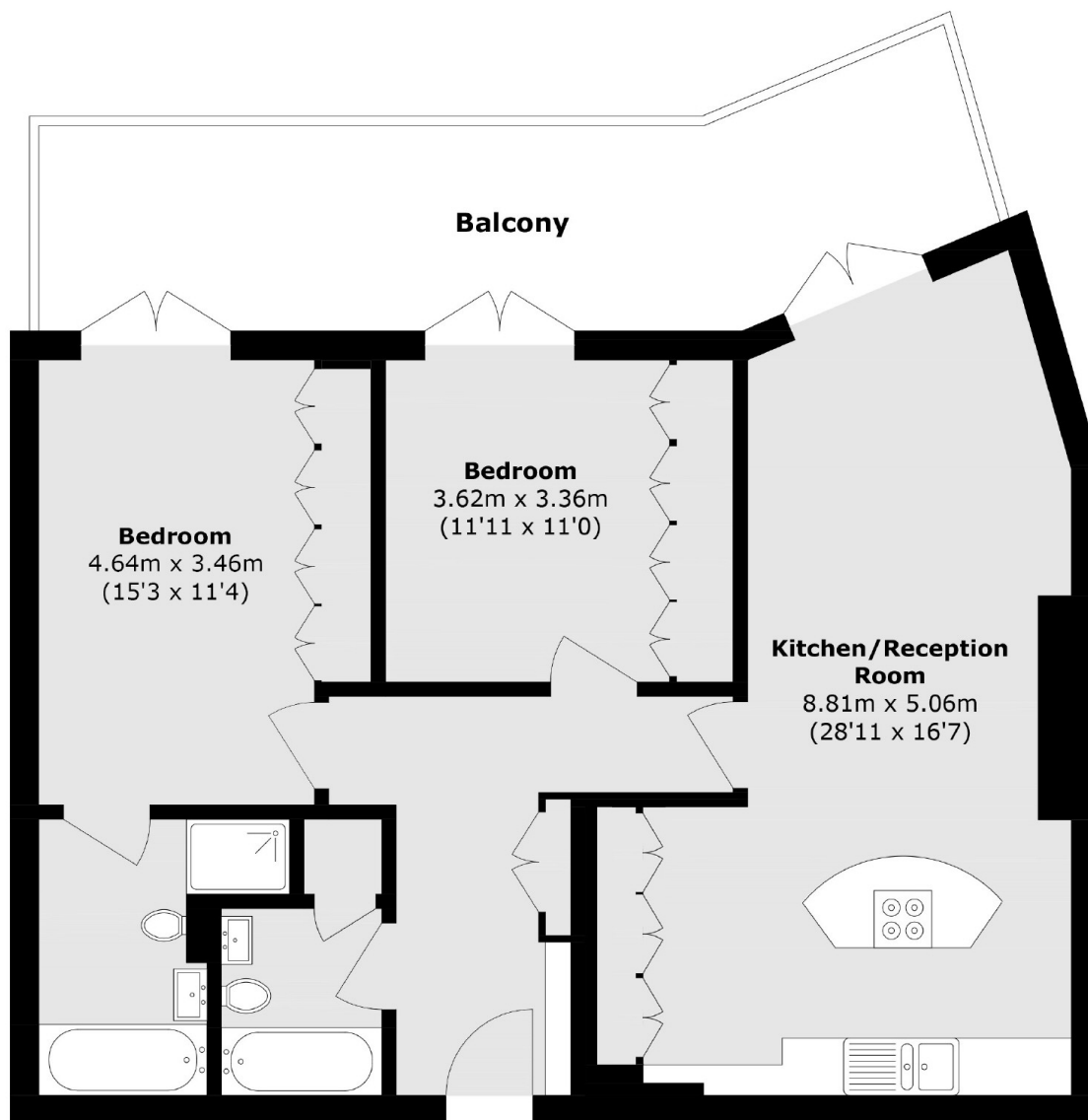
This two-bedroom, two-bathroom apartment is set within a quiet, gated development in the heart of Angel. The layout features an open-plan kitchen and living area, redesigned to maximise space for entertaining. The primary bedroom includes an en-suite bathroom with full-sized bathtub and separate shower. Both bedrooms, along with the living area, open onto a spacious private terrace. Being offered chain free and a secure underground parking space.

Located in the heart of Angel and tucked away off of Islington's vibrant Upper Street, known for its bars, cafés, restaurants, and boutique shops, the property offers access to excellent transport links. Angel Station is under half a mile away, as well as convenient connections from Highbury & Islington Station and Essex Road Station.

Features

- Chain Free
- Two Bedrooms
- Two Bathrooms
- Large Private Terrace
- Communal Gardens
- Gated Development
- 24 Hour Concierge
- Secure Underground Parking

Essex Road, London, N1



Total area (approx.): 84.0 sq. m (904.1 sq. ft)

Balcony area (approx.): 20.7 sq. m (222.8 sq. ft)