



Moon Street, N1

£5,000 Per week

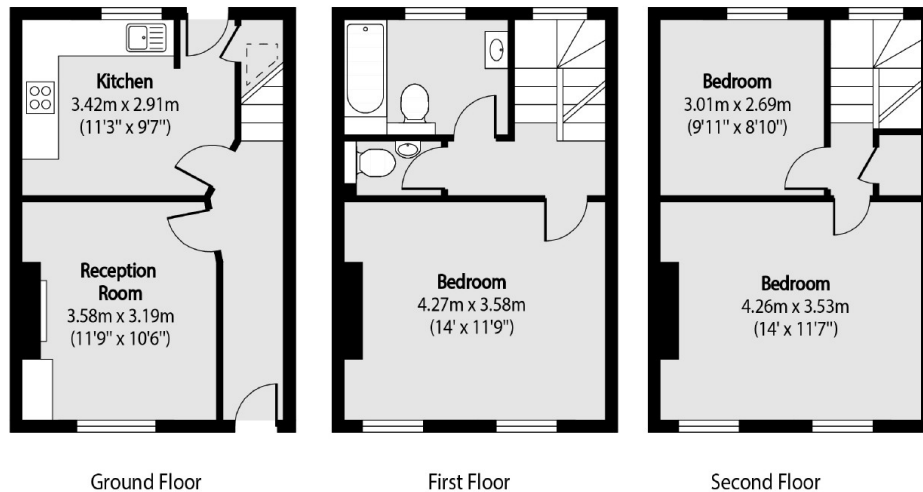
A Georgian house in an excellent location in the heart of Angel. The property is laid out over three floors comprising of a separate kitchen, one bathroom and direct access to a private garden.

Moon Street is located just off of the vibrant Upper Street with an array of shops, restaurants, cafes and nightlife and is less than half a mile from Angel and Highbury & Islington stations.

Features

- Close To Angel Station
- Private Garden
- Georgian Mid Terraced House
- Brand new Fitted Kitchen
- Students Welcome
- Amazing Location

Moon Street, London, N1



Ground Floor

First Floor

Second Floor

Total area (approx): 85.14 sq m (916 sq. ft)