



Thornhill Bridge Wharf, N1

£5,900 Per week

This four double bedroom, three bathroom house has a large open plan reception room with two private terraces either side plus a patio area making this an ideal home for those who enjoy entertaining.

Thornhill Bridge Wharf is under half a mile from King's Cross & St Pancras Stations with incredible local, national and international transport links. It is a short walk from Coal Drops Yard shopping centre with a huge choice of restaurants and cafes.

Features

- Four Bedroom House
- Gated Mews Development
- Three Bathrooms
- Two Private Terraces
- Beautifully Presented
- Close to King's Cross

Thornhill Bridge Wharf, London, N1

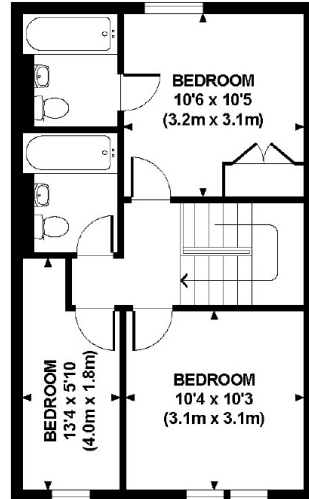
THORNHILL BRIDGE WHARF, N1

Approx. gross internal area

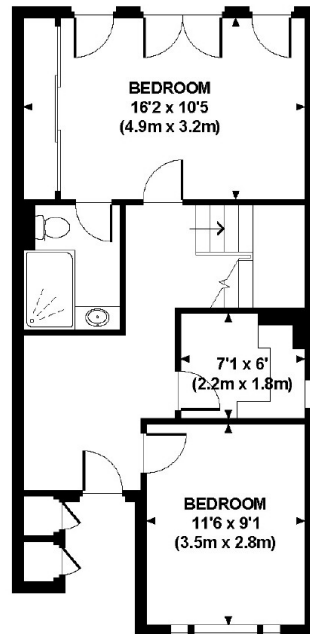
1401 Sq Ft. / 130.2 Sq M.

Representation of current layout.

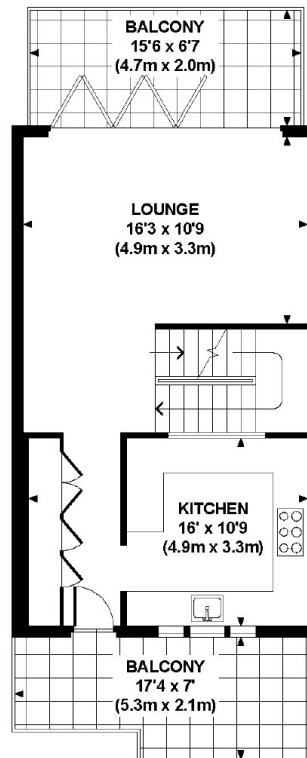
Not to scale.



SECOND FLOOR



GROUND FLOOR



FIRST FLOOR