



Baldwin Terrace, N1

£4,000 Per calendar month

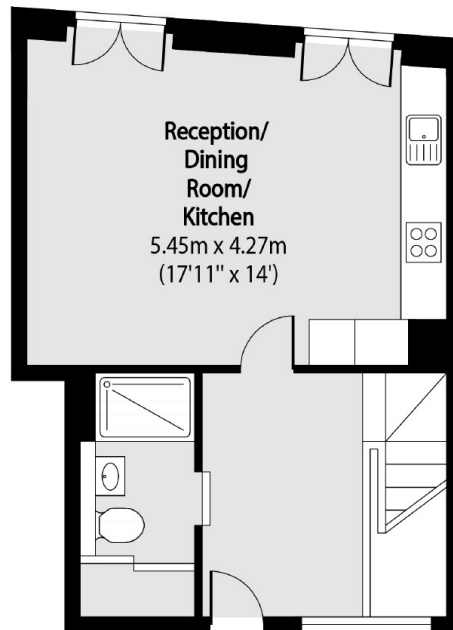
A split level two bedroom, two bathroom maisonette overlooking the canal. This property has a modern finish throughout with an open plan kitchen reception with wood flooring and a juliette balcony. The kitchen is fully integrated creating a contemporary and practical space. Downstairs has two double bedrooms leading to a private balcony and built in storage.

Baldwin Terrace is in the heart of Angel and a short walk from Angel Underground Station and Upper Street. Residents have all the shops, cafe's, bars and pubs of Angel at their door step.

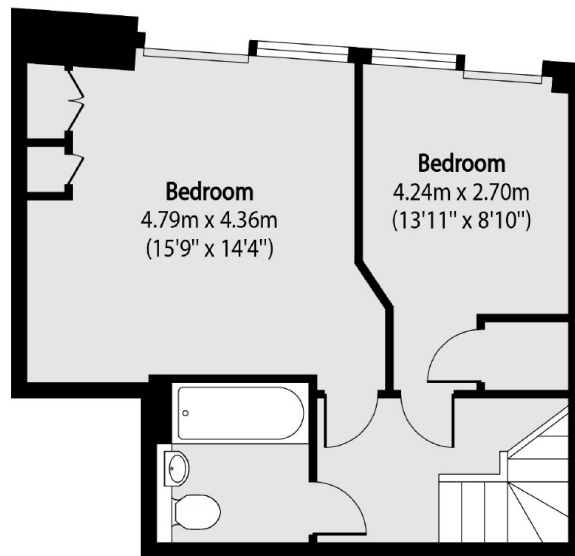
Features

Two Bedroom
Split Level
Two Bathroom
Private Balcony
On The Canal
Modern

Baldwin Terrace, London, N1



Ground Floor



Lower Ground Floor

Total area (approx): 80.29 sq m (864 sq. ft)