



Baldwin Terrace, N1

£4,000 Per week

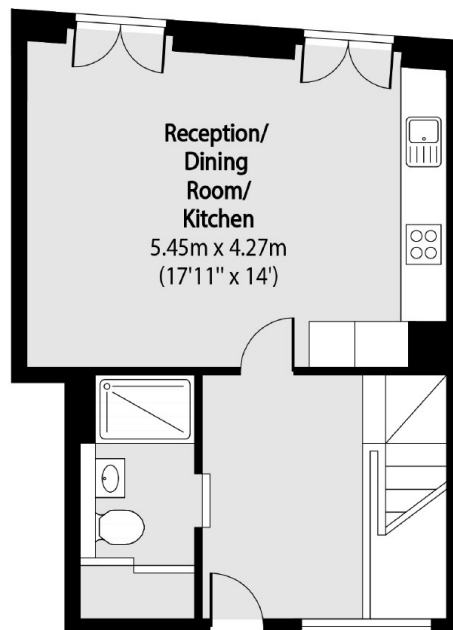
A split level two bedroom, two bathroom maisonette overlooking the canal. This property has a modern finish throughout with an open plan kitchen reception with wood flooring and a Juliette balcony. The kitchen is fully integrated creating a contemporary and practical space. Downstairs has two double bedrooms leading to a private balcony and built in storage.

Baldwin Terrace is in the heart of Angel and a short walk from Angel Underground Station and Upper Street. Residents have all the shops, cafe's, bars and pubs of Angel at their door step.

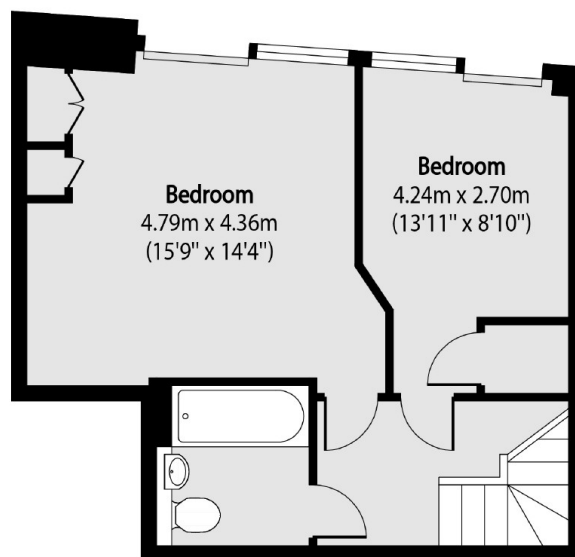
Features

- Two Bedroom
- Split Level
- Two Bathroom
- Private Balcony
- On The Canal
- Modern

Baldwin Terrace, London, N1



Ground Floor



Lower Ground Floor

Total area (approx): 80.29 sq m (864 sq. ft)