



## Micawber Street, N1

£4,250 Per calendar month

The Micawber Wharf development is located at the base of Wenlock Basin just off Regents Canal. This stunning apartment is within easy access of both Angel and Old Street Stations and the City.

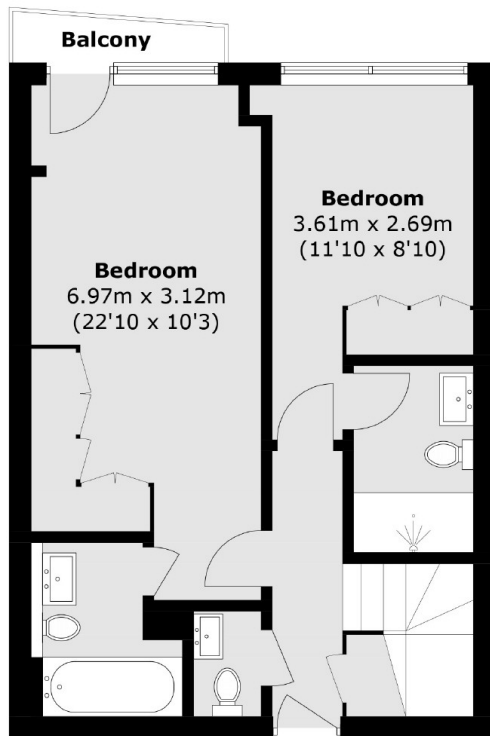
This apartment located on the third floor offers two double bedrooms, and two bathrooms internal staircase leads you to the fourth floor and a spacious open plan reception and kitchen with integrated modern appliances and granite work tops. A balcony leads directly off the main reception and master bedroom. A guest cloakroom is positioned off the hallway.

The apartment is located under half a mile away from Old Street and Angel Station with all the local benefits of trendy bars, cafés and restaurants of Old Street and Shoreditch.

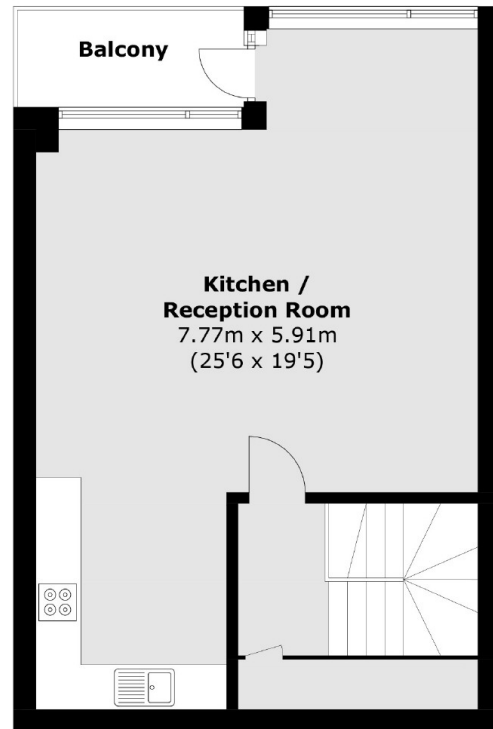
### Features

- Split Level Apartment
- Two Double Bedrooms
- Two Bathrooms
- Furnished
- Ideal Location
- Modern Throughout

# Micawber Street, London, N1



**Third Floor**



**Fourth Floor**

Total area (approx.): 100.1 sq. m (1,077.1 sq. ft)  
Balcony: 5.6 sq. m (60.3 sq. ft)