



## Baldwin Terrace, N1

£4,200 Per week

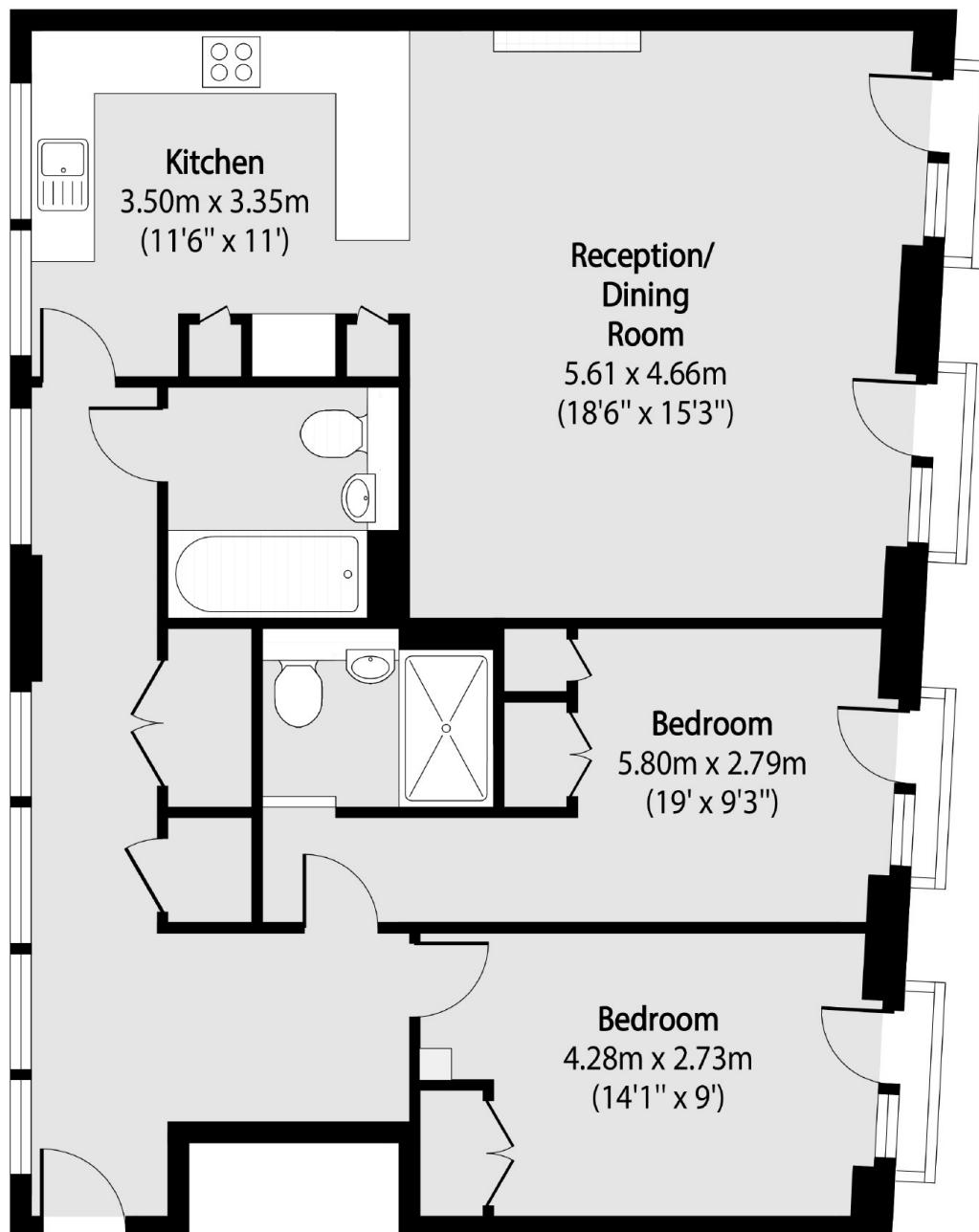
A two bedroom apartment on Baldwin Terrace. This property has two double bedrooms, two bathroom a spacious open plan kitchen/reception room with wood flooring and floor to ceiling windows. The apartment has canal views from all rooms and a modern finish throughout with built in storage.

Baldwin Terrace is in the heart of Angel and a short walk from Angel and Old Street Underground Station offering easy access to the City and Kings Cross. Residents have all the shops, cafe's, bars and pubs of Upper Street and Regents Canal at their doorstep making this an ideal location.

### Features

- Two Bedroom
- Two Bathroom
- Canal Views
- Open Plan
- Modern
- Close to Transport

# Baldwin Terrace, London, N1



Total area (approx): 91.42 sq m (984 sq. ft)