



Drummond Way, N1

£825,000

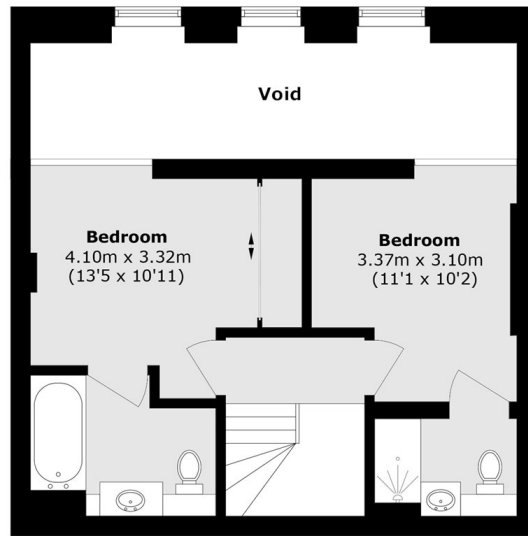
A two bedroom apartment in a converted school in Barnsbury. This modern flat has an open plan kitchen / reception, two bathrooms, guest WC and a private parking space. This gated development benefits from an on site concierge and is being offered chain free.

Both Highbury & Islington and Caledonian Road & Barnsbury stations are less than half a mile away, providing access to the Victoria, overground and National Rail lines. The shops, bars and restaurants of Islington's Upper Street are also within easy reach.

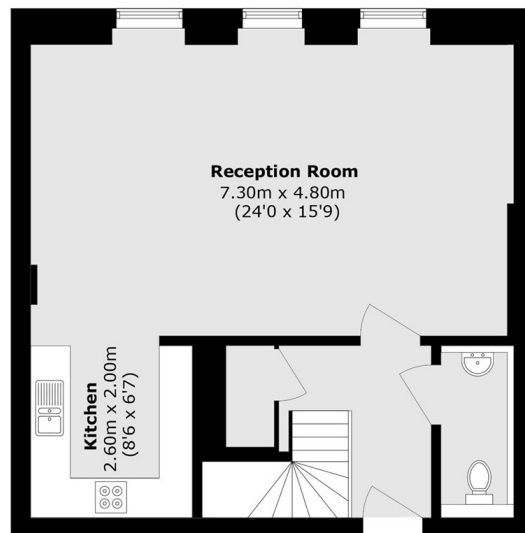
Features

- Two Bedrooms
- Split Level
- Gated Development
- On-Site Concierge
- Two Bathrooms
- School Conversion
- Parking Space

Drummond Way, London, N1



First Floor



Ground Floor

Total area (approx.): 91.4 sq. m (983.8 sq. ft)
(Excluding void)