



Woodgrange Avenue, W5

£849,999

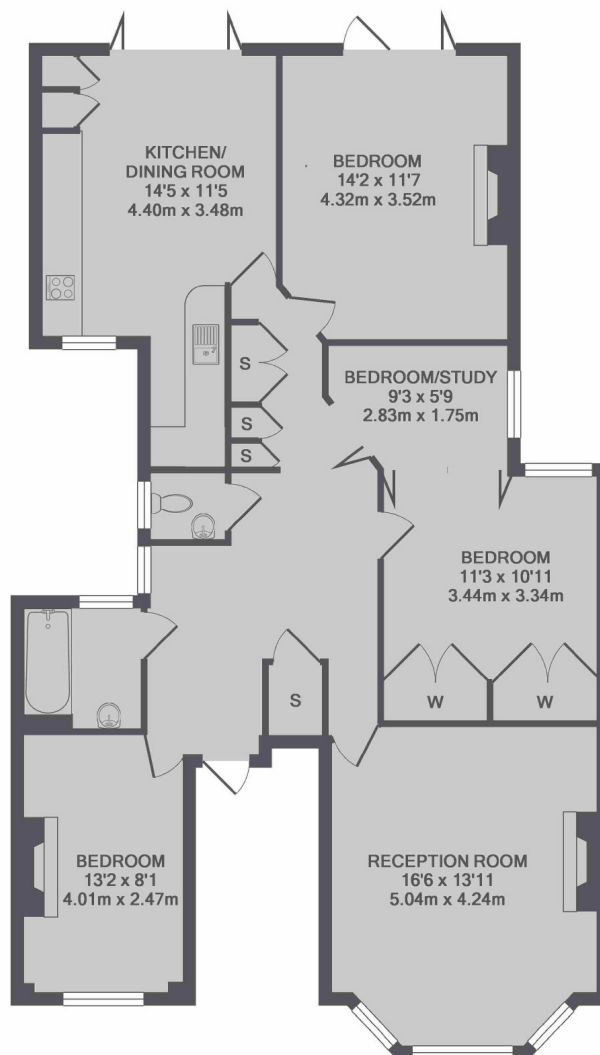
A substantial Edwardian three/four bedroom ground floor apartment. There are high ceilings, fireplaces and period features throughout the flat with a large private garden to the rear.

Woodgrange Avenue is a cul-de-sac, only a short distance from Ealing Common station (District & Piccadilly Lines) and close to shops for both Ealing Common and Ealing Broadway.

Features

Ground Floor
Three/Four Bedrooms
Period Features
Private Garden
Close To Transport
Ealing Common

Woodgrange Avenue, London, W5



TOTAL APPROX. FLOOR AREA 1107 SQ.FT. (102.8 SQ.M.)

Contact

To arrange a viewing call our office on the number below or visit our website.



Energy Rating: D. We aim to make our particulars both accurate and reliable. However they are not guaranteed; nor do they form part of an offer or contract. If you require clarification on any points then please contact us, especially if you're traveling some distance to view. Please note that appliances and heating systems have not been tested and therefore no warranties can be given as to their good working order.