



## Waldegrave Road, W5

£835,000

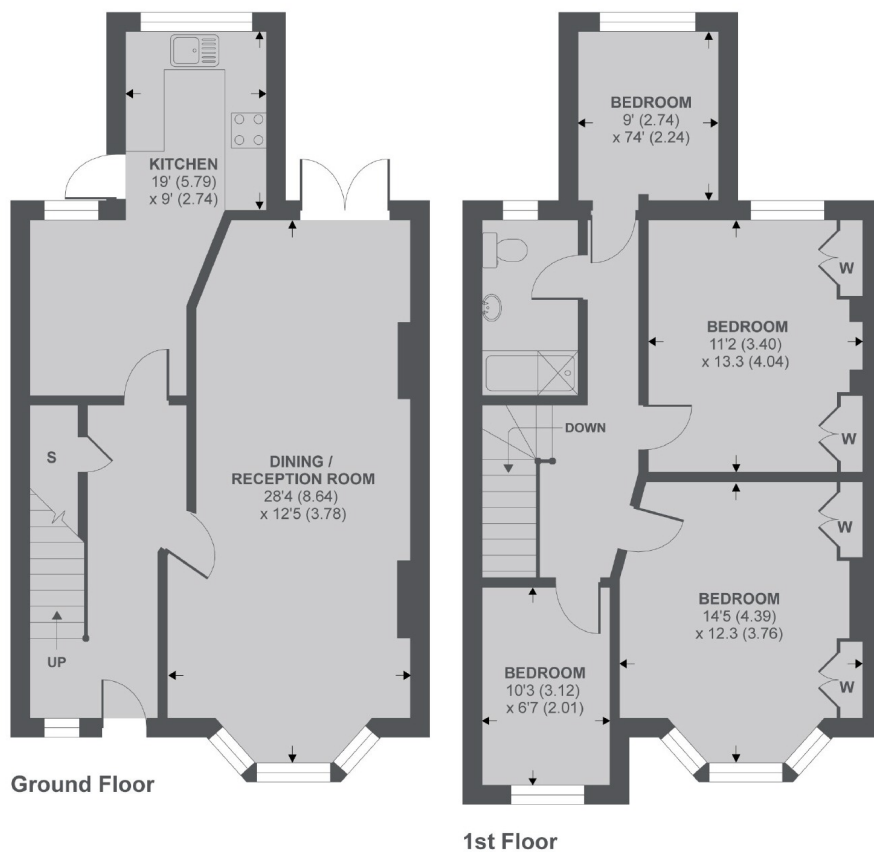
A spacious four bedroom period home with many features retained throughout. There is potential to extend in to the loft (STPP) and a large garden to match this family home.

Waldegrave Road is a cul-de-sac location with multiple transport links and shops within easy reach. North Ealing, Ealing Common and Ealing Broadway Tube stations are all close by.

### Features

Four Bedrooms  
Period Features  
Recently Modernised  
Cul-De-Sac Location  
Close To Transport  
No Onward Chain

## Waldegrave Road, London, W5



APPROX FLOOR AREA 1226 SQ.FT 113.8 SQ.M

Copyright nichecom.co.uk 2019 REF : 556357

### Contact

To arrange a viewing call our office on the number below or visit our website.



Energy Rating: E. We aim to make our particulars both accurate and reliable. However they are not guaranteed; nor do they form part of an offer or contract. If you require clarification on any points then please contact us, especially if you're traveling some distance to view. Please note that appliances and heating systems have not been tested and therefore no warranties can be given as to their good working order.