



## Western Gardens, W5

### £1,900,000

This five bedroom semi-detached family home located close to Ealing Common. This property has five/six bedrooms, three bathrooms, off street parking and a large garden, backing onto a quiet bowls green beyond.

Western Gardens is located in the sought after Ealing Common area with multiple transport links including Piccadilly, District and Central lines. The newly opened Elizabeth line is also accessed via Ealing Broadway, less than a mile away.

### Features

- Period Home
- Five/Six Bedrooms
- Off Street Parking
- Large Garden
- Ealing Common Location
- No Onward Chain



## Western Gardens, W5

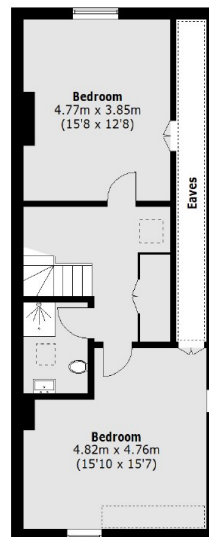
A spacious receiving hallway welcomes you as you enter the home with its original tiled flooring. A formal reception room is off to one side with high ceilings and original detailing. A utility room and downstairs W.C. Separates the front and rear reception which is an extend open-plan kitchen/dining room.

There are five/six bedrooms over the top two floors of the property with an en-suite and dressing room adjoining the principle bedroom. There are further family bathrooms, servicing the rest of the bedrooms, located on both the first and second floors.

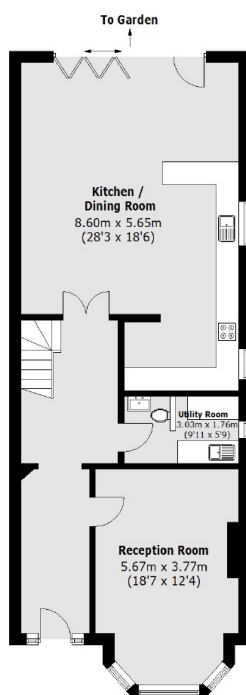




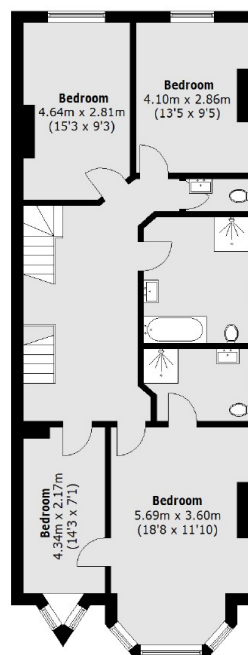
# Western Gardens, London, W5



Second Floor



Ground Floor



First Floor

Total area (approx.): 237.0 sq. m (2,551.0 sq. ft)  
(Excluding Eaves)

## Dexters

Ealing  
2 New Ealing Broadway  
London  
W5 2NU  
Sales  
020 8810 0909

Energy Rating: D. We aim to make our particulars both accurate and reliable. However they are not guaranteed; nor do they form part of an offer or contract. If you require clarification on any points then please contact us, especially if you're traveling some distance to view. Please note that appliances and heating systems have not been tested and therefore no warranties can be given as to their good working order.

 **RICS** | Regulated  
Estate Agent  
and Letting Agent

[dexters.co.uk](https://www.dexters.co.uk)