



Lynton Road, W3

£999,950

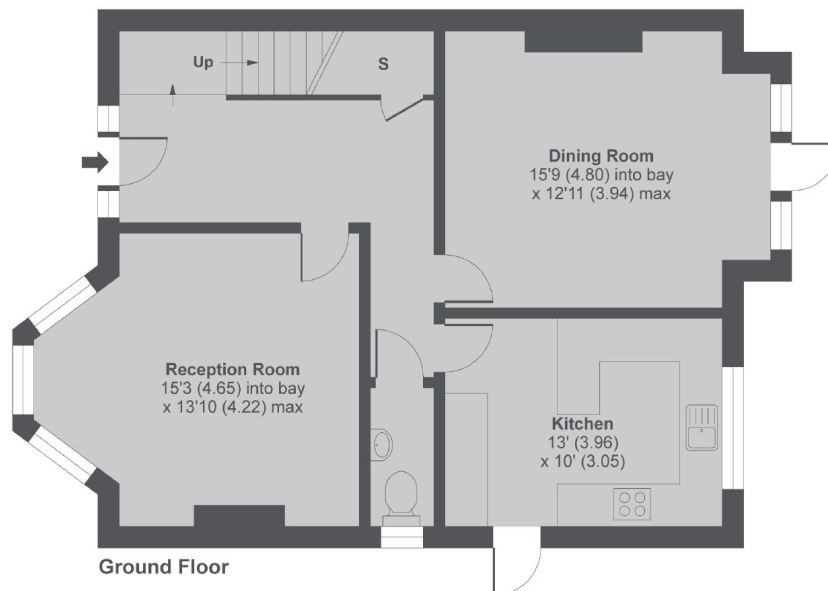
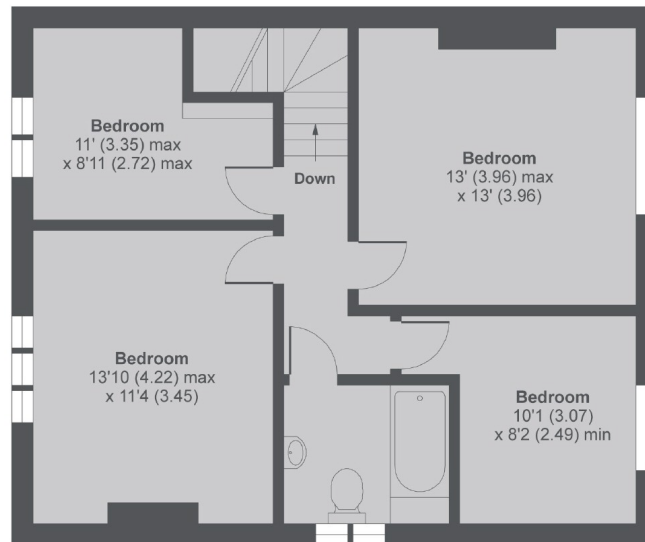
This 1920s built house is situated less than 400m from Acton's forthcoming Crossrail station, Acton Main Line. The house has a substantial south-facing garden and there is plenty of potential to extend.

There are two local supermarkets located within 350m of the house. West Acton and North Acton tube stations are located close by.

Features

1920s Built
Semi-Detached
Four Bedrooms
Two Receptions
Potential To Extend
Off-Street Parking

Lynton Road, London, W3



Lynton Road, W3

MAIN HOUSE APPROX FLOOR AREA 1361 SQ.FT 126.44 SQ.M

Copyright nichecom.co.uk 2017 Produced for Dexters REF : 187434

Contact

To arrange a viewing call our office on the number below or visit our website.



Energy Rating: D. We aim to make our particulars both accurate and reliable. However they are not guaranteed; nor do they form part of an offer or contract. If you require clarification on any points then please contact us, especially if you're traveling some distance to view. Please note that appliances and heating systems have not been tested and therefore no warranties can be given as to their good working order.