



Friars Place Lane, W3

£1,250,000

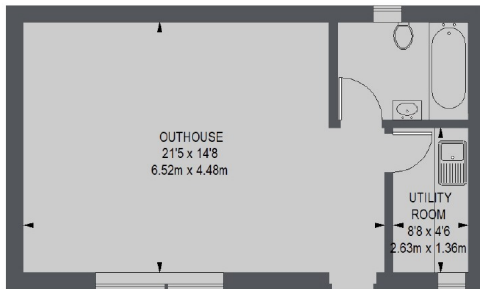
Situated on a corner plot and within the sought-after Goldsmith Estate, this 1930s detached house has in excess of 2,200 sq.ft of internal floor space. At the front there is driveway parking for multiple vehicles.

Half a mile from Acton Central station (Overground) and under three quarters of a mile from Acton Main Line (forthcoming Elizabeth Line) and East Acton tube (Central Line).

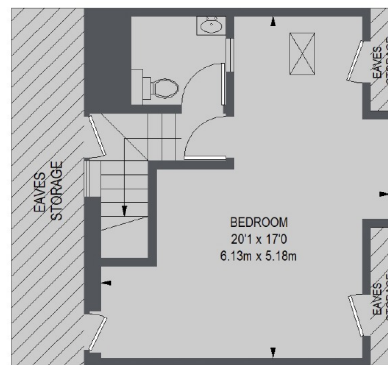
Features

- Detached House
- Five Bedrooms
- Three Bathrooms
- Off-Street Parking
- Outbuilding
- No Onward Chain

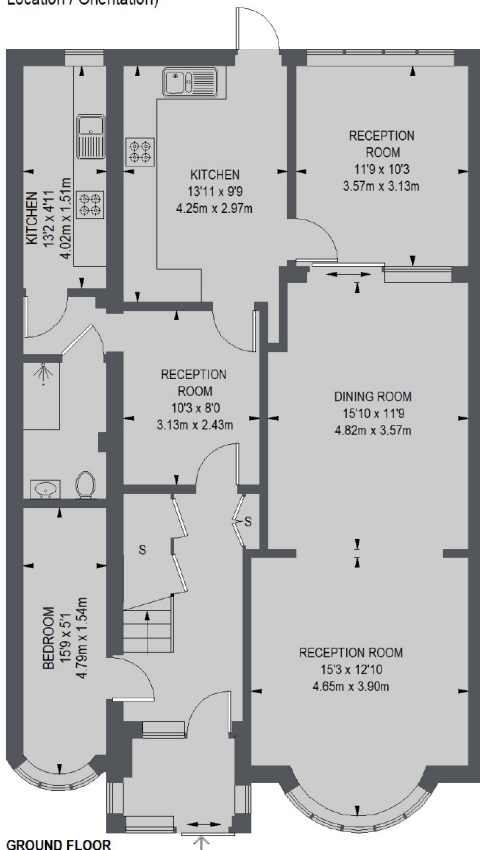
Friars Place Lane, London, W3



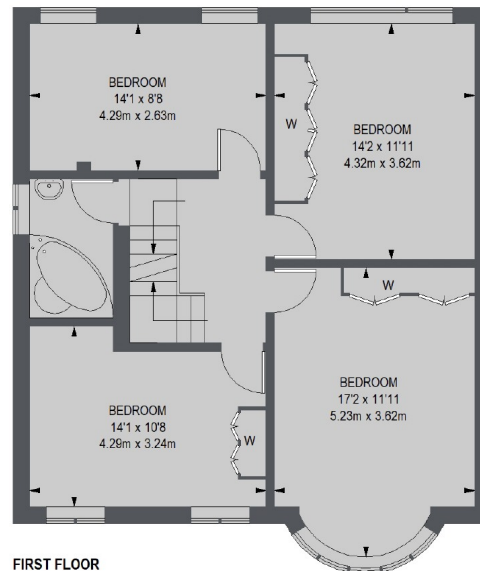
OUTHOUSE
(Not Shown In Actual
Location / Orientation)



SECOND FLOOR



GROUND FLOOR



FIRST FLOOR

TOTAL APPROX. FLOOR AREA (EXCLUDING EAVES STORAGE)
2206 SQ. FT. (204.9 SQ. M.)
OUTHOUSE = 389 SQ. FT. 36.17 SQ. M.

Contact

To arrange a viewing call our office on the number below or visit our website.



Energy Rating: D. We aim to make our particulars both accurate and reliable. However they are not guaranteed; nor do they form part of an offer or contract. If you require clarification on any points then please contact us, especially if you're traveling some distance to view. Please note that appliances and heating systems have not been tested and therefore no warranties can be given as to their good working order.