



Howard Close, W3

£999,950

Dexters





## Howard Close, London, W3

This beautifully extended house is arranged over three floors and has circa 1,900 sq.ft of internal floor space. The ground floor has a substantial 31' by 25' open-plan reception room with direct garden access.

The ground floor has been created with entertaining space at the forefront of the design. The Linda Barker designed kitchen, under-floor heating and bi-folding doors leading onto the garden all contribute to a contemporary character throughout.

On the first floor there are three double bedrooms and two bathrooms (one with a jacuzzi) and the second floor is home to the master suite with an en suite bathroom.

Just over a quarter of a mile from West Acton tube station (Central line) and under three quarters of a mile from Acton Main Line station (forthcoming Elizabeth line).

### Features

Semi-Detached House  
South-Facing Garden  
Under-Floor Heating  
Downstairs WC  
Linda Barker Kitchen  
Three Bathrooms







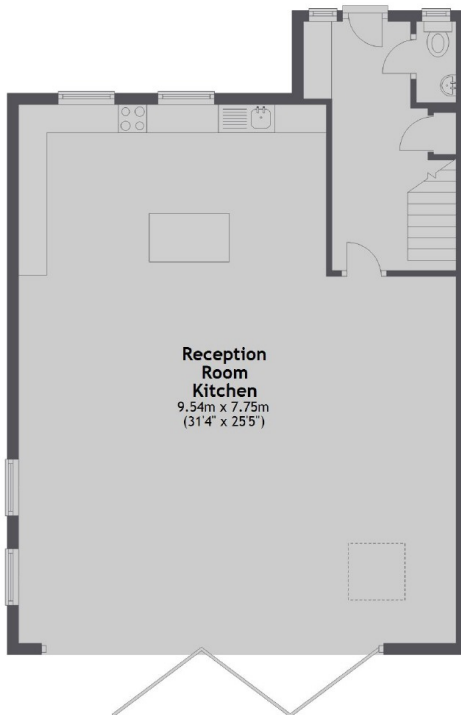




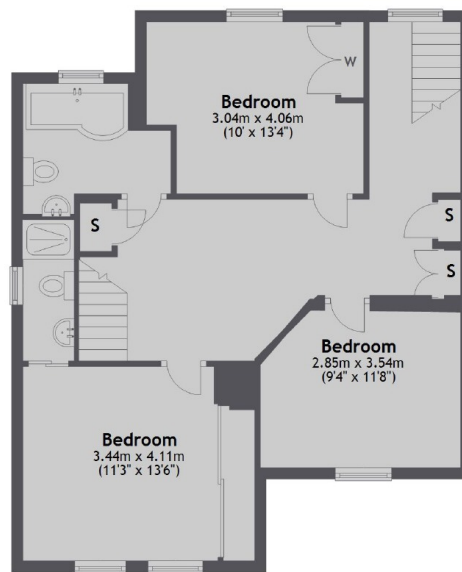


# Howard Close, London, W3

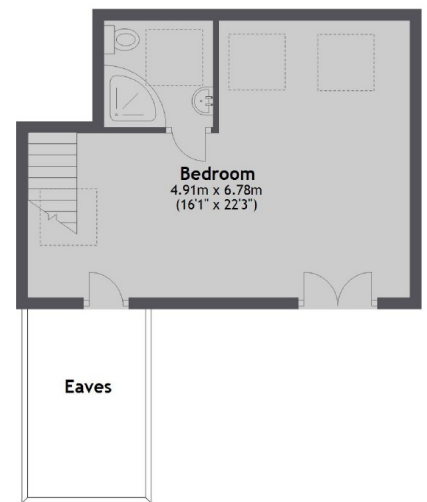
Ground Floor



First Floor



Second Floor



Total area: approx. 173.4 sq. metres (1866.5 sq. feet)

**Dexters**

Acton  
170 High Street, Acton,  
London, W3 6QZ

Sales  
020 8896 2112

Energy Rating: D. We aim to make our particulars both accurate and reliable. However they are not guaranteed; nor do they form part of an offer or contract. If you require clarification on any points then please contact us, especially if you're traveling some distance to view. Please note that appliances and heating systems have not been tested and therefore no warranties can be given as to their good working order.

**RICS** Regulated  
Estate Agent  
and Letting Agent

[dexters.co.uk](http://dexters.co.uk)