



Crane Avenue, W3

£1,669,500

Dexters



Crane Avenue, London, W3

This outstanding period home is truly one of a kind. Arranged over three floors with five bedrooms and an array of reception rooms to entertain, this detached house is uniquely the only address on the road.

The ground floor is home to three reception rooms and a separate kitchen and dining area with doors leading out onto the stunning south-facing garden.

On the first floor there are four bedrooms and two bathrooms one of which is an en suite. There is a balcony off one of the bedrooms that looks out onto the road.

The top floor is home to the master bedroom suite with an en suite bathroom. There is plenty of light flowing in through the large south-facing windowpanes and an attractive southerly aspect Juliet balcony.

Situated within the Poets' Corner area and less than half a mile from Acton Central station (Overground) and Acton Main Line station (forthcoming Elizabeth line).

Features

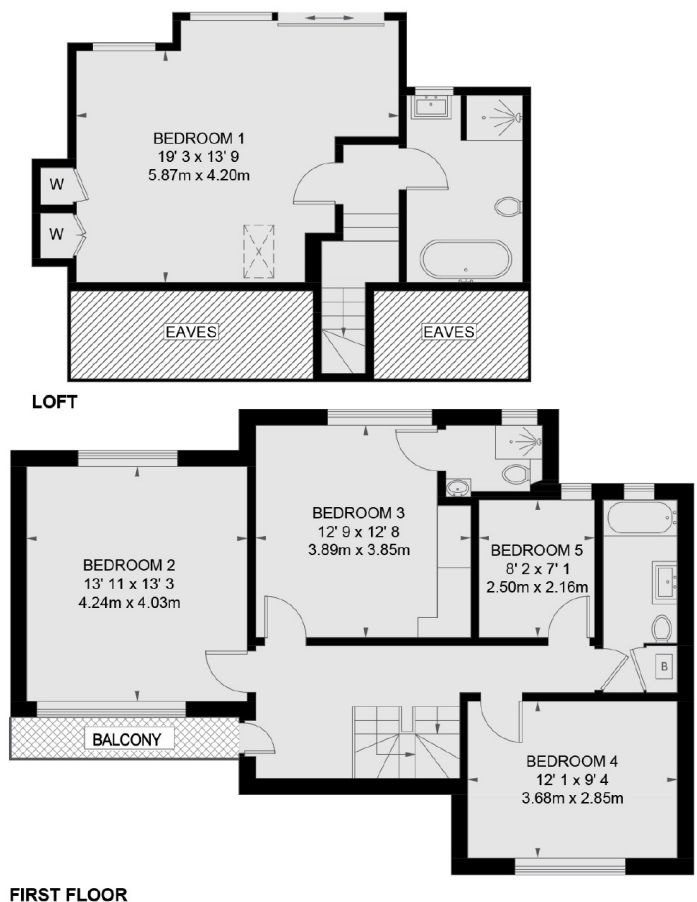
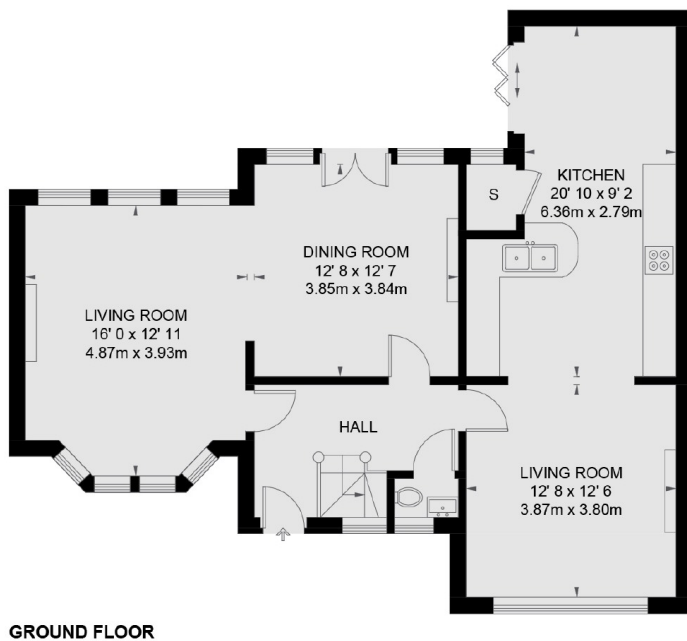
- Detached House
- South-Facing Garden
- Driveway Parking
- Oak Flooring
- Working Fireplaces
- Edwardian Period House







Crane Avenue, London, W3



TOTAL APPROX. FLOOR AREA 2076 SQ. FT. (192.9 SQ. M.)
TOTAL APPROX. TERRACE AREA 34 SQ. FT. (3.2 SQ. M.)

Dexters

Acton
170 High Street, Acton,
London, W3 6QZ
Sales
020 8896 2112

Energy Rating: D. We aim to make our particulars both accurate and reliable. However they are not guaranteed; nor do they form part of an offer or contract. If you require clarification on any points then please contact us, especially if you're traveling some distance to view. Please note that appliances and heating systems have not been tested and therefore no warranties can be given as to their good working order.

RICS | Regulated
Estate Agent
and Letting Agent

dexters.co.uk