



## Third Avenue, W3

£1,325,000

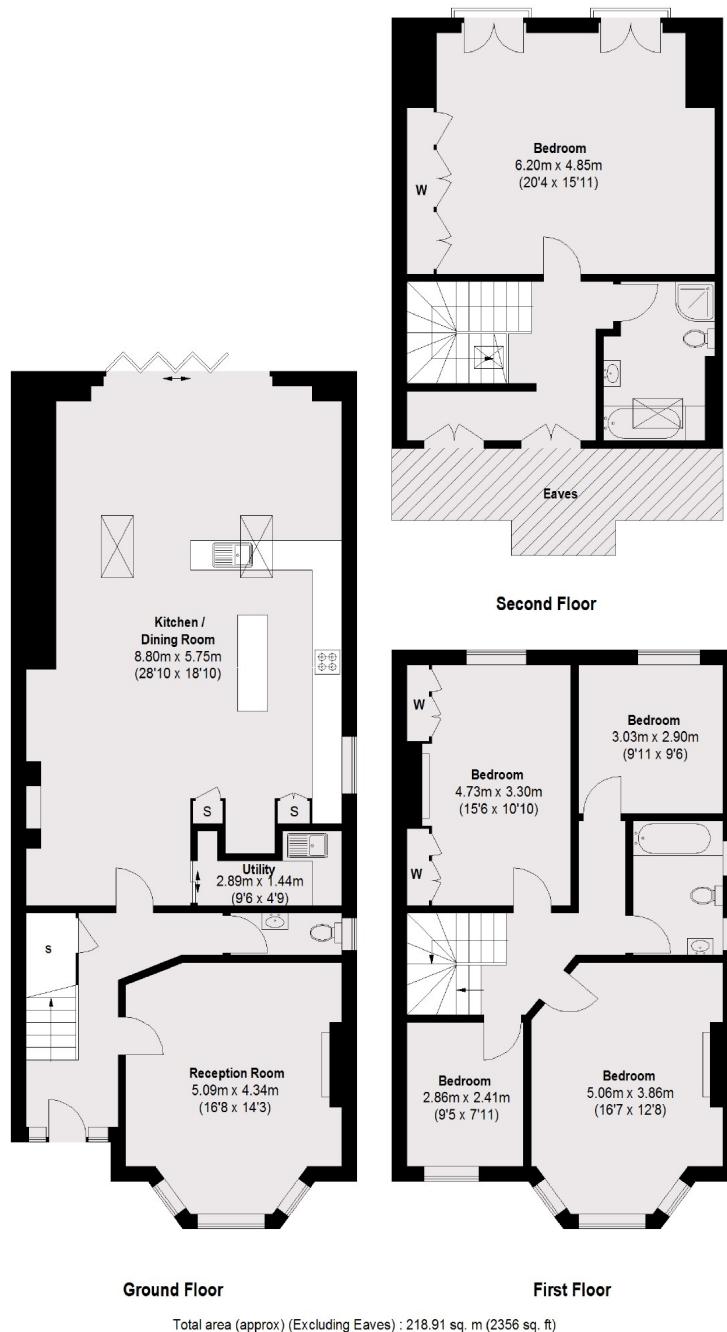
This large Victorian house is situated in a quiet residential street and has just under 2400sqft of immaculately renovated living space while maintaining the Victorian character of the house.

This property is conveniently located to the local amenities of the askew road where there are many shops, bars and restaurants. Transport links include East Acton tube station, along with the 207, 607 bus routes.

### Features

Victorian house  
Residential Street  
Five bedrooms  
Fully Renovated  
Two Bathrooms  
Close To Askew Road

## Third Avenue, London, W3



### Contact

To arrange a viewing call our office on the number below or visit our website.



Energy Rating: D. We aim to make our particulars both accurate and reliable. However they are not guaranteed; nor do they form part of an offer or contract. If you require clarification on any points then please contact us, especially if you're traveling some distance to view. Please note that appliances and heating systems have not been tested and therefore no warranties can be given as to their good working order.