

The Green, W3

£1,100,000

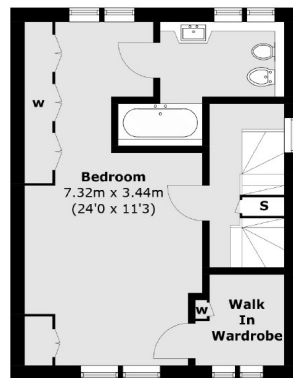
Arranged over four floors with over 2,000 sq.ft of internal floor space is this stunning end of terrace house with four double bedrooms and four bathrooms. The house is fitted with underfloor heating and air conditioning units.

Just over a quarter of a mile from East Acton tube station (Central line) and just over three quarters of a mile from Acton Main Line station (forthcoming Elizabeth line).

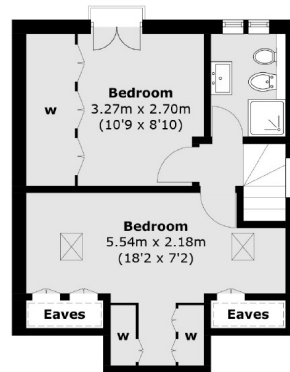
Features

- Four Bedrooms
- Four Bathrooms
- Air Conditioning
- Underfloor Heating
- Utility Room
- Master Suite With Jacuzzi

The Green, London, W3

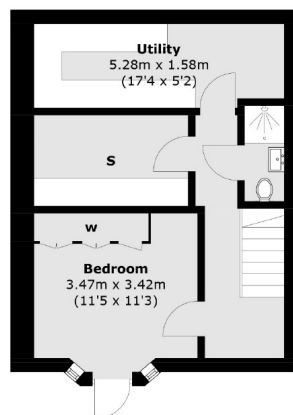


First Floor

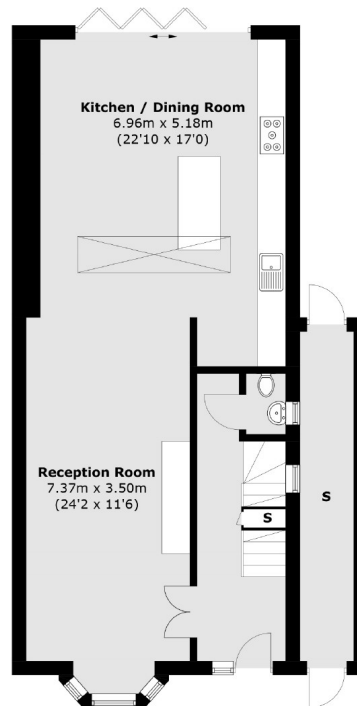


Second Floor

= Reduced headroom below 1.5m / 5'0



Lower Ground Floor



Raised Ground Floor

Total area (approx.): 187.5 sq. m (2,018.2 sq. ft)
Store: 8.4 sq. m (90.4 sq. ft)
(Excluding Eaves)

Contact

To arrange a viewing call our office on the number below or visit our website.



Energy Rating: C. We aim to make our particulars both accurate and reliable. However they are not guaranteed; nor do they form part of an offer or contract. If you require clarification on any points then please contact us, especially if you're traveling some distance to view. Please note that appliances and heating systems have not been tested and therefore no warranties can be given as to their good working order.