

Willcott Road, W3

£1,200,000

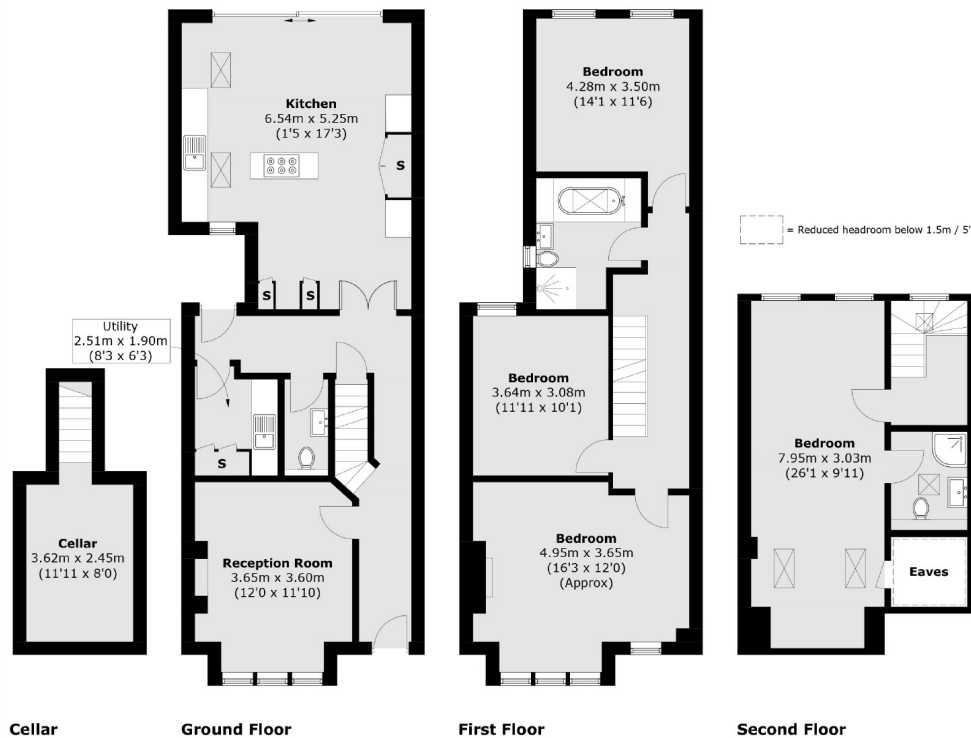
A stunning semi-detached period home arranged over three floors. The house has been recently refurbished by the current owner to a high standard throughout and is ready to move in to.

Under half a mile from Acton Town and Ealing Common tube stations (District and Piccadilly lines) and under a mile from Acton Main Line station (forthcoming Elizabeth line).

Features

Semi-Detached
Four Bedrooms
Just Under 2,000 sq.ft
Cellar
No Onward Chain
Integrated Alarm System

Willcott Road, London, W3



Total area (approx.): 177.1 sq. m (1,906.3 sq. ft)
(Excluding Eaves)

Contact

To arrange a viewing call our office on the number below or visit our website.



Energy Rating: D. We aim to make our particulars both accurate and reliable. However they are not guaranteed; nor do they form part of an offer or contract. If you require clarification on any points then please contact us, especially if you're traveling some distance to view. Please note that appliances and heating systems have not been tested and therefore no warranties can be given as to their good working order.