



## Princes Avenue, W3

£829,950

A mid-terraced home with a favourable front aspect overlooking the green. The house has three bedrooms, two receptions and a rear eat-in kitchen. There is potential to considerably extend the house into the loft space (STPP).

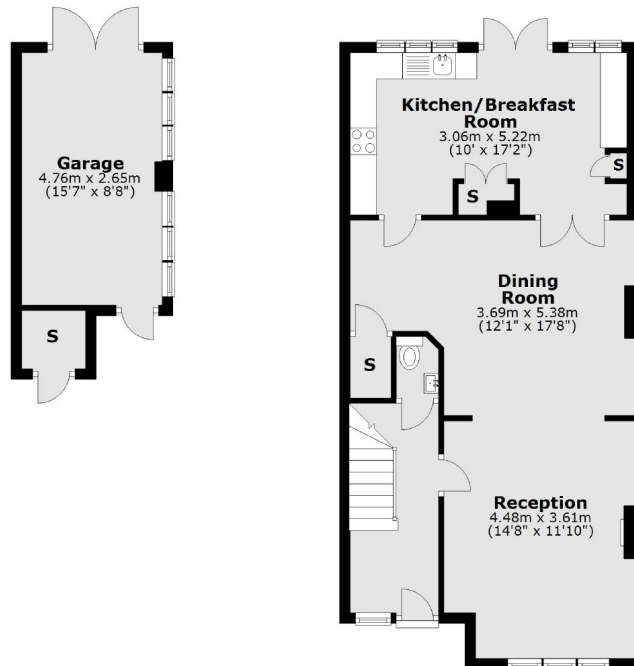
Situated within the Gunnersbury Park Conservation Area and less than a quarter of a mile from Acton Town tube station (District and Piccadilly lines).

### Features

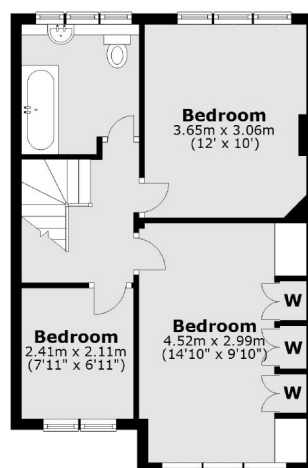
- Three Bedrooms
- Two Receptions
- Rear Garage
- No Onward Chain
- Potential To Extend (STPP)
- Rear Access Road

## Princes Avenue, London, W3

### Ground Floor



### First Floor



Main area: Approx. 102.2 sq. metres (1100.2 sq. feet)  
Plus garages, approx. 12.6 sq. metres (136.0 sq. feet)

### Contact

To arrange a viewing call our office on the number below or visit our website.



Energy Rating: C. We aim to make our particulars both accurate and reliable. However they are not guaranteed; nor do they form part of an offer or contract. If you require clarification on any points then please contact us, especially if you're traveling some distance to view. Please note that appliances and heating systems have not been tested and therefore no warranties can be given as to their good working order.