



## Acacia Road, W3

£1,100,000

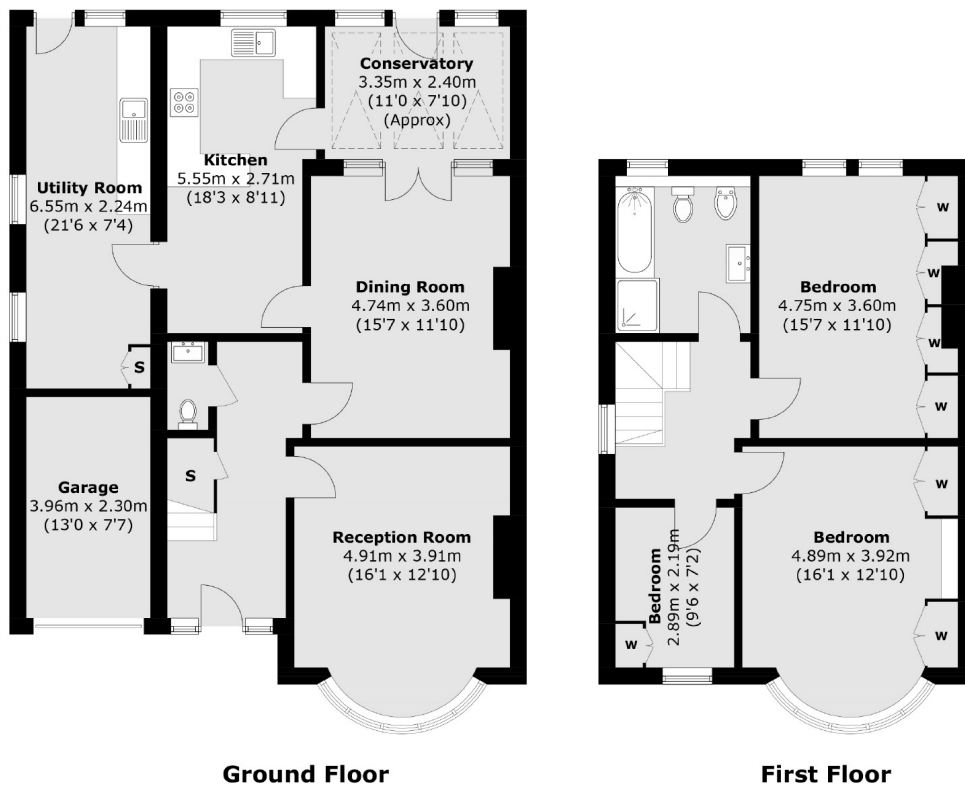
This 1930s built family home occupies a large plot with a garage and driveway parking for multiple vehicles. The property has a stunning rear garden and presents an opportunity to significantly extend (STPP).

Situated in a prime location and only a short walk from Churchfield Road. Acton Central (Overground) and Acton Main Line (forthcoming Elizabeth line) stations are both half a mile away.

### Features

- Semi-Detached
- Three Bedrooms
- Potential To Extend
- Off-Street Parking
- Garage
- Large Garden

## Acacia Road, London, W3



Total area (approx.): 145.6 sq. m (1,567.3 sq. ft)  
 Garage: 9.0 sq. m (96.8 sq. ft)  
 Total: 154.6 sq. m (1,664.1 sq. ft)

### Contact

To arrange a viewing call our office on the number below or visit our website.



Energy Rating: E. We aim to make our particulars both accurate and reliable. However they are not guaranteed; nor do they form part of an offer or contract. If you require clarification on any points then please contact us, especially if you're traveling some distance to view. Please note that appliances and heating systems have not been tested and therefore no warranties can be given as to their good working order.