

Eastfields Road, W3

£895,000

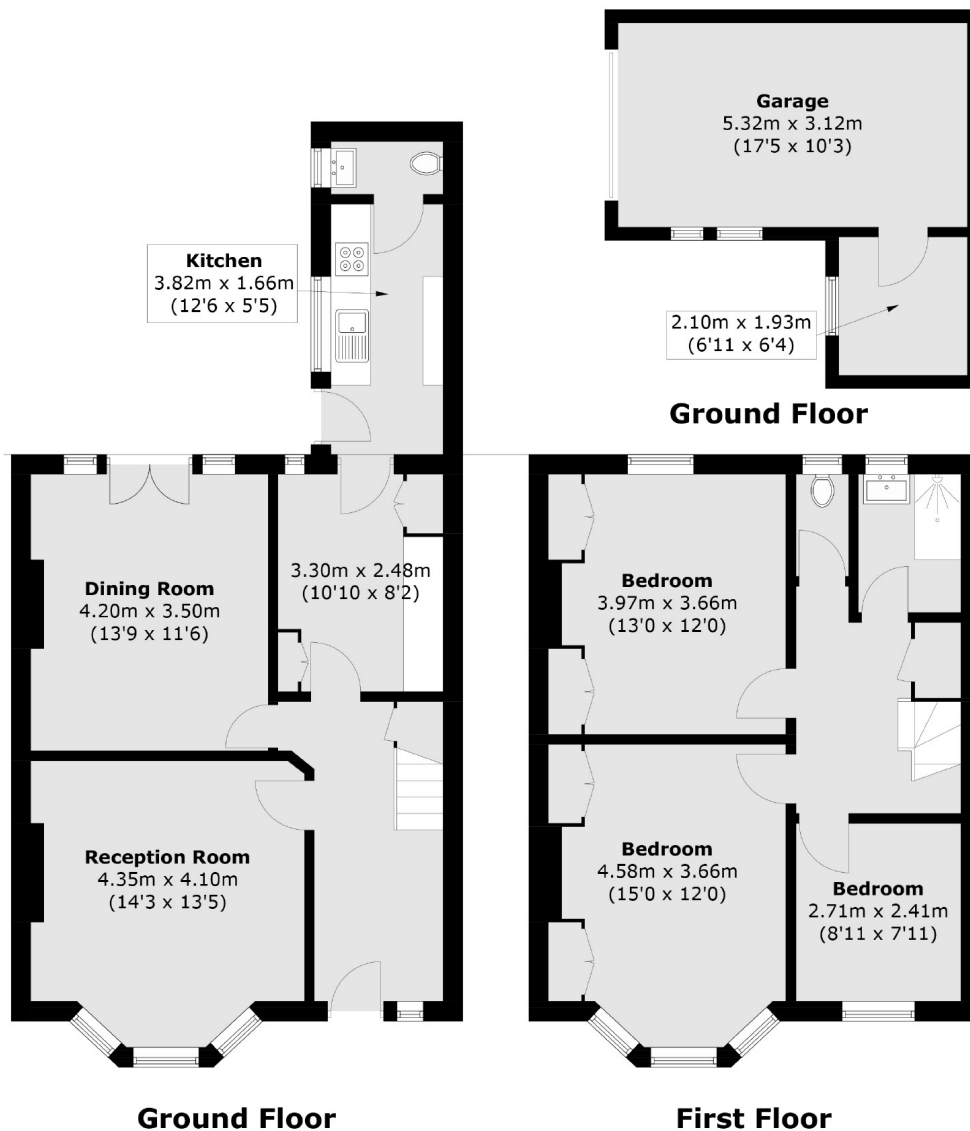
This charming semi-detached Edwardian home as an enviable position overlooking North Acton Playing Fields. The house has significant potential to be extended and there is a garage with side access from the adjacent road.

Under half a mile from Acton Main Line station (forthcoming Elizabeth line) and approximately half a mile from West and Acton and North Acton tube stations (Central line).

Features

Edwardian Period
Semi-Detached
No Onward Chain
Potential To Extend STPP
Garage
Feature Balcony

Eastfields Road, London, W3



Total area (approx.): 111.8 sq. m (1,203.3 sq. ft)
Garage: 20.8 sq. m (223.8 sq. ft)

Contact

To arrange a viewing call our office on the number below or visit our website.



Energy Rating: D. We aim to make our particulars both accurate and reliable. However they are not guaranteed; nor do they form part of an offer or contract. If you require clarification on any points then please contact us, especially if you're traveling some distance to view. Please note that appliances and heating systems have not been tested and therefore no warranties can be given as to their good working order.