



## Heathfield Road, W3

### £1,200,000

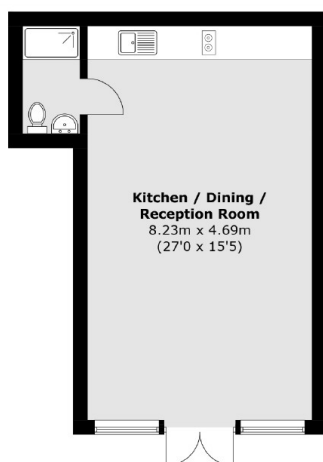
A fantastic semi-detached house located on a quiet tree lined residential road within the highly popular Mill Hill Conservation Area. This five-bedroom family home occupies a prime position on Heathfield Road and is set over three floors. It features three spacious reception rooms, a washroom and a kitchen / dining room that opens onto a large patio garden. There are five well-sized bedrooms spread over two floors. The first floor hosts four bedrooms and a family bathroom with stairs leading up to the second floor, which offers a private ensuite bedroom and ample storage. The property includes off-street parking, a private rear garage and a large annex with a shower room.

Heathfield Road is just moments away from the wide array of shops and restaurants that Chiswick and Acton have to offer, along with Gunnersbury Park. There are also excellent transport links nearby, including Acton Town train station (serving the Piccadilly and District lines) and South Acton Overground station.

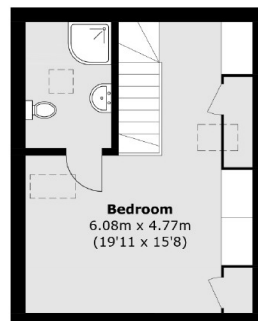
### Features

Semi Detached  
Five Bedrooms  
Off Street Parking  
Large Annex  
2170 Square Feet  
Chain Free

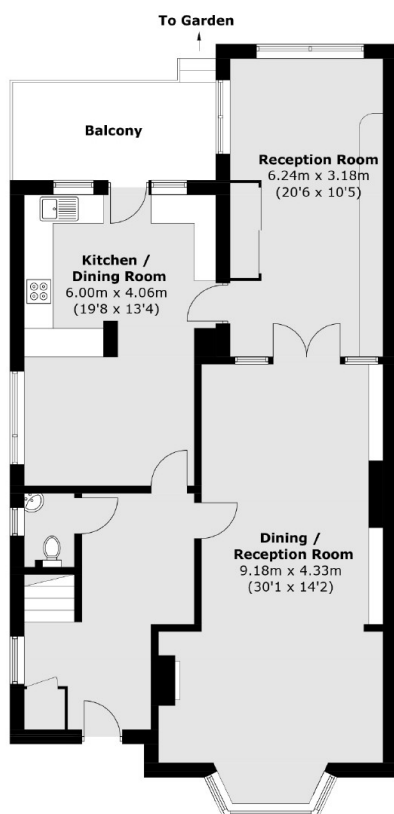
# Heathfield Road, London, W3



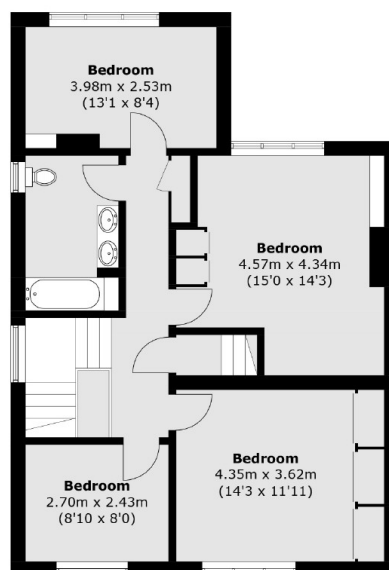
**Outbuilding**



**Second Floor**



**Ground Floor**



**First Floor**

Total area (approx.): 201.9 sq. m (2,173.1 sq. ft)  
Outbuilding area (approx.): 42.0 sq. m (452.0 sq. ft)  
Balcony area (approx.): 8.7 sq. m (93.6 sq. ft)