

Cecil Road, W3

£949,950

A charming four bedroom end of terrace family home boasting over 1,550 sq.ft of internal living space and arranged over three floors. This property benefits from a large driveway parking for multiple vehicles along with a South Facing Garden.

The owners have extended and opened up the rear of the ground floor creating a large kitchen and family living area along with a separate reception room and downstairs WC.

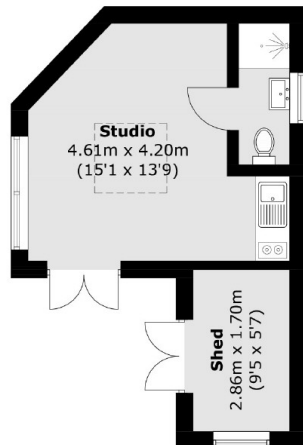
Additionally there are four bright good size bedrooms along with a family bathroom. On the top floor the principle bedroom opens up to a Juliette balcony and has access to a large en suite bathroom. Cecil Road is being sold with no onward chain,

Located 0.3 miles from Acton Main Line station (Elizabeth line) and

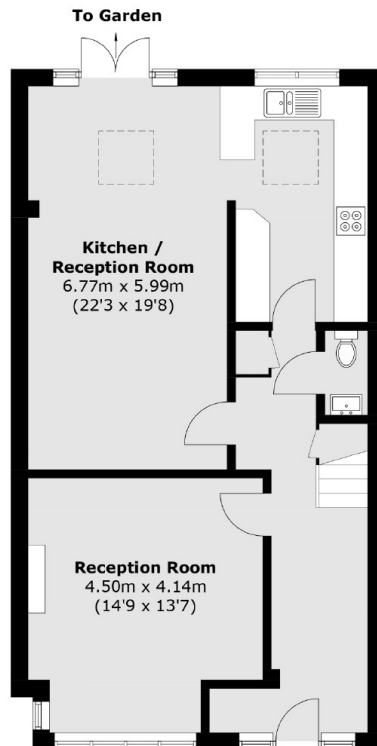
Features

- Four Bedroom
- Three Bathrooms
- End of Terrace
- Summer House
- Off Street Parking
- Chain Free

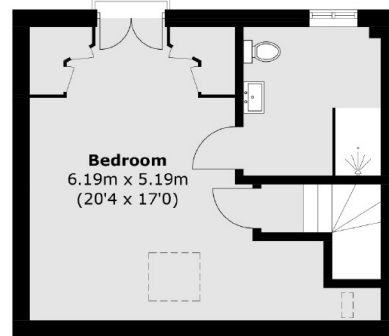
Cecil Road,
London, W3



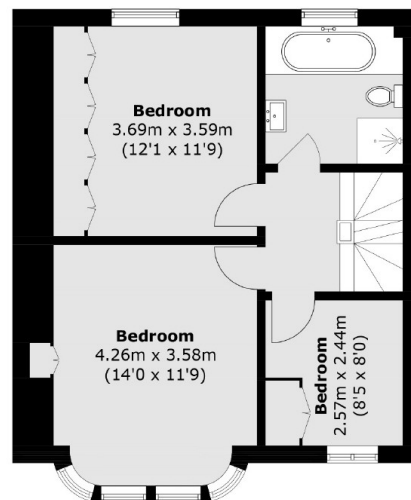
Summer House
(Not Shown In Actual
Location / Orientation)



Ground Floor



Second Floor



First Floor

Total area (approx.): 148.5 sq. m (1,598.4 sq. ft)
Summer House: 23.7 sq. m (255.1 sq. ft)

Dexters

Acton
171 High Street
London
W3 6LP
Sales
020 8896 2112

Energy Rating: D. We aim to make our particulars both accurate and reliable. However they are not guaranteed; nor do they form part of an offer or contract. If you require clarification on any points then please contact us, especially if you're traveling some distance to view. Please note that appliances and heating systems have not been tested and therefore no warranties can be given as to their good working order.

 **RICS** | Regulated
Estate Agent
and Letting Agent

dexters.co.uk