



## Seacole Close, W3

### £370,000

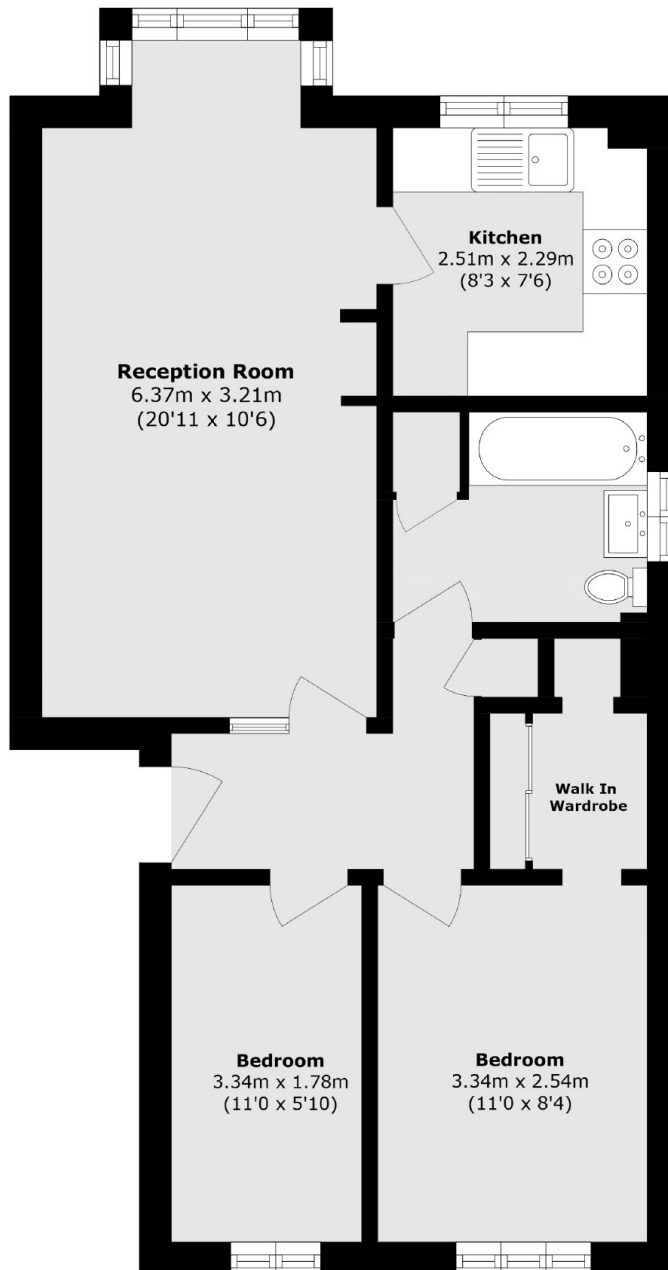
This first floor two bedroom apartment has been beautifully finished to include wooden flooring, a bright kitchen with a spacious living area. The Principle bedroom has access to a walk-in wardrobe with additional storage throughout. The property also comes with resident parking, as well as a communal garden.

Just under half a mile from Acton Main Line station (Elizabeth line) and North Acton (Central line) tube station. Local shops are located 650m away.

### Features

- Two Bedrooms
- First Floor
- Allocated Parking
- Long Lease
- Communal Gardens
- Good Transport Links

# Seacole Close, London, W3



Total area (approx.): 54.3 sq. m (584.4 sq. ft)

## Dexters

Acton  
171 High Street  
London  
W3 6LP  
Sales  
020 8896 2112

Energy Rating: C. We aim to make our particulars both accurate and reliable. However they are not guaranteed; nor do they form part of an offer or contract. If you require clarification on any points then please contact us, especially if you're traveling some distance to view. Please note that appliances and heating systems have not been tested and therefore no warranties can be given as to their good working order.

 **RICS** | Regulated  
Estate Agent  
and Letting Agent

[dexters.co.uk](https://dexters.co.uk)