



Faraday Road, W3

£1,050,000

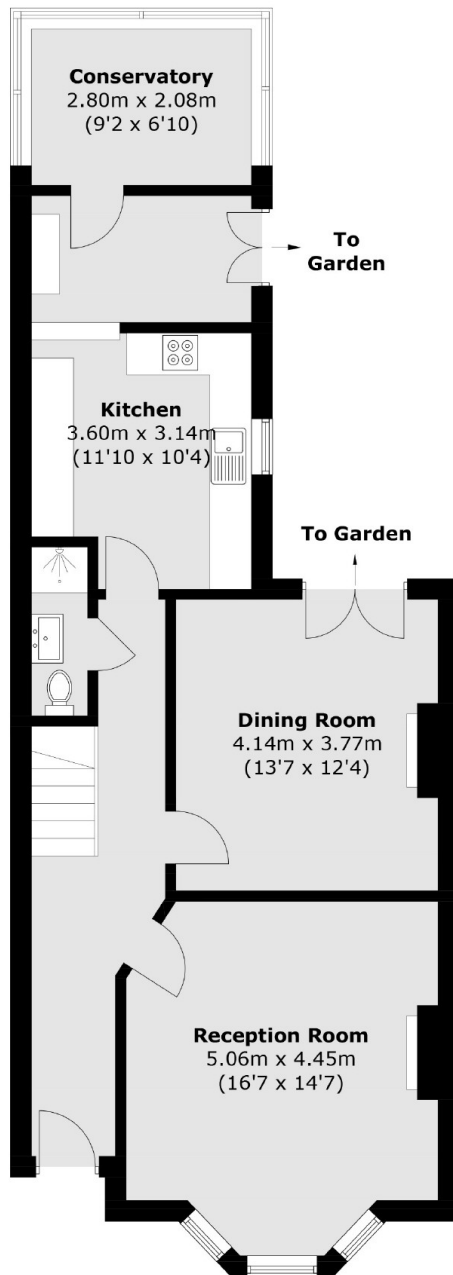
A four bedroom family home arranged over two floors with further scope to extend into the loft space (subject to consents). The house has circa 1,600 sq.ft of living space and will be sold with no onward chain.

A short walk away from Acton Main Line station (Elizabeth line) and half a mile from North Acton tube station (Central line).

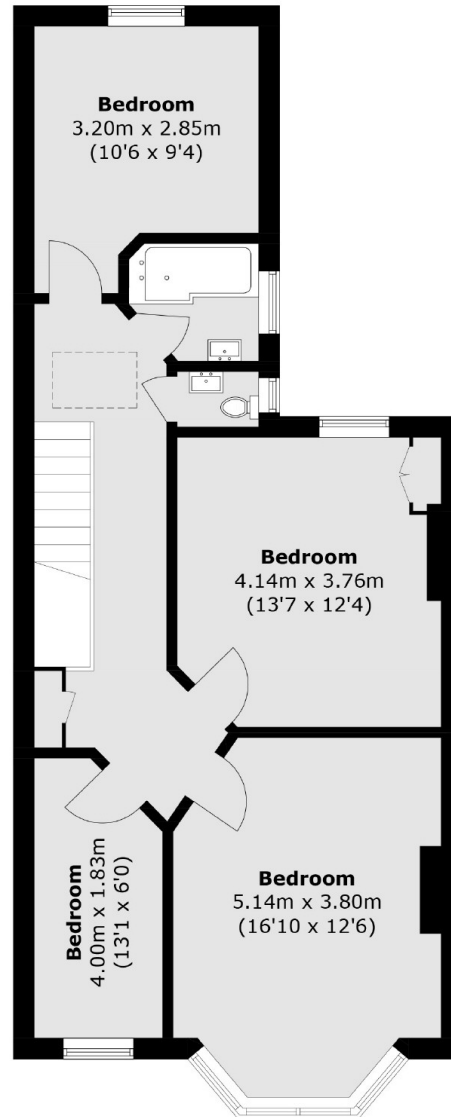
Features

Four Bedrooms
Two Receptions
Edwardian House
Circa 1,600 sq.ft
Separate Kitchen
No Onward Chain

Faraday Road, London, W3



Ground Floor



First Floor

Total area (approx.): 147.0 sq. m (1,582.3 sq. ft)