

Acton Lane, W3

£1,250,000

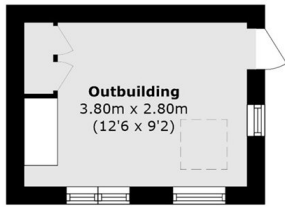
This attractive Edwardian terraced home, five-bedroom freehold property has been thoughtfully renovated to combine timeless character with high-spec contemporary living. Meticulously upgraded throughout, the property offers beautifully considered design, outstanding storage solutions, and a true turn key finish.

Acton Lane is situated close to Acton High Street and Turham Green Terrace of Chiswick, where there is an array of Boutique shops, Restaurants, Bars and Cafés. Local primary schools are excellent (Ark Priory and Ark Byron). Transport links include Turnham Green Terrace (District line), Acton Town (Piccadilly and District), Acton Central & Acton Main Line (Elizabeth Line)

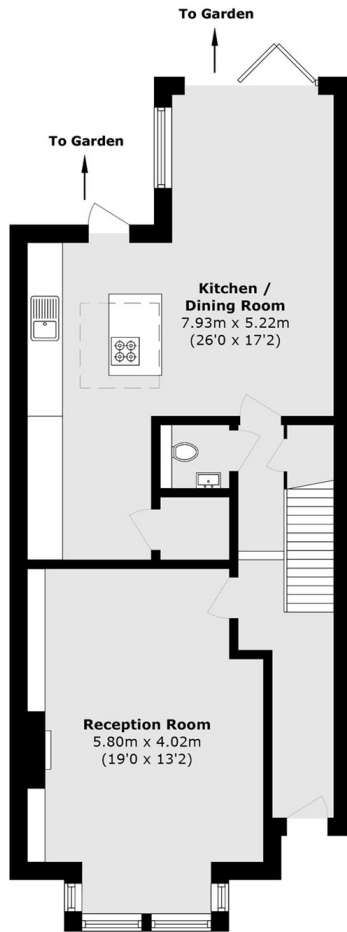
Features

- Five bedrooms
- Edwardian house
- South facing garden
- Outhouse
- Excellent schools
- Energy rating: c

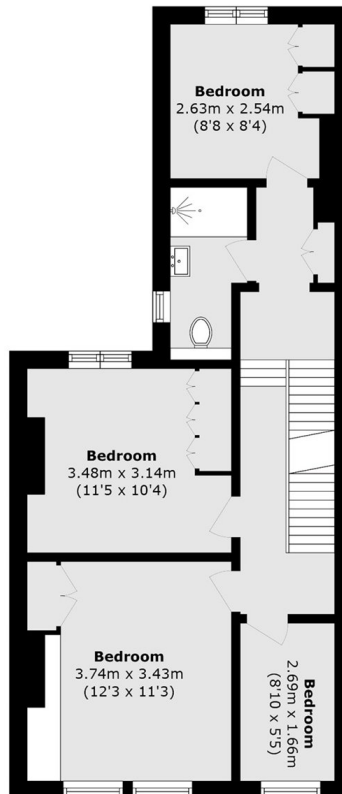
Acton Lane, London, W3



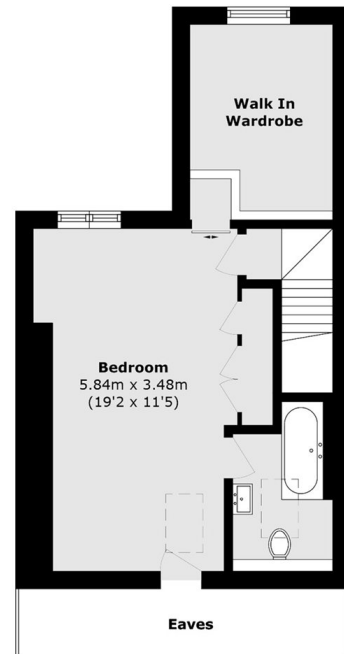
Ground Floor



Ground Floor



First Floor



Second Floor

Total area (approx.): 154.6 sq. m (1664.1 sq. ft)
(Excluding Eaves)
Outbuilding area (approx.): 10.6 sq. m (114.0 sq. ft)