



Thorney Hedge Road, W4

£1,150,000

A spacious semi-detached four bedroom family home located in central Chiswick just off the High Road. The property is in excellent condition having been refurbished throughout by the current owner.

Thorney Hedge Road is just off Chiswick High Road and within half a mile of Gunnersbury and Kew Bridge stations. There is also easy access to both the A4 and M4.

Features

- Four Bedrooms
- Two Bathrooms
- South-West Facing Garden
- Great Transport Links
- No Onward Chain
- Excellent Condition



Thorney Hedge Road, London, W4

Located on a quiet road this house consists of a double reception room with a feature fireplace, wood flooring throughout and a large eat-in kitchen with doors opening to the private rear garden. Upstairs are three double bedrooms and a modern family bathroom. The loft has been converted to create a master bedroom with en suite shower room and separate dressing room.

There is planning permission in place to create off-street parking at the front of the property along with the potential to further extend on the ground floor subject to the usual consents.

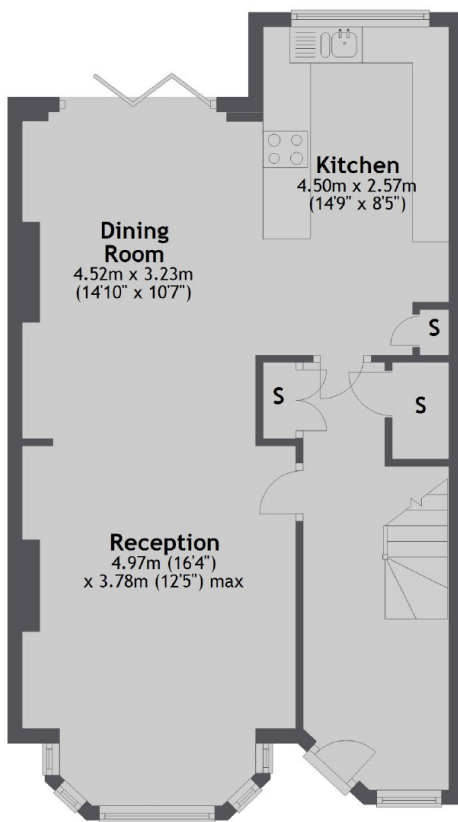
Thorney Hedge Road is an attractive tree-lined road off Chiswick High Road, running into Silver Crescent, the property is ideally located close to Chiswick Business Park and Gunnersbury tube/overground station.



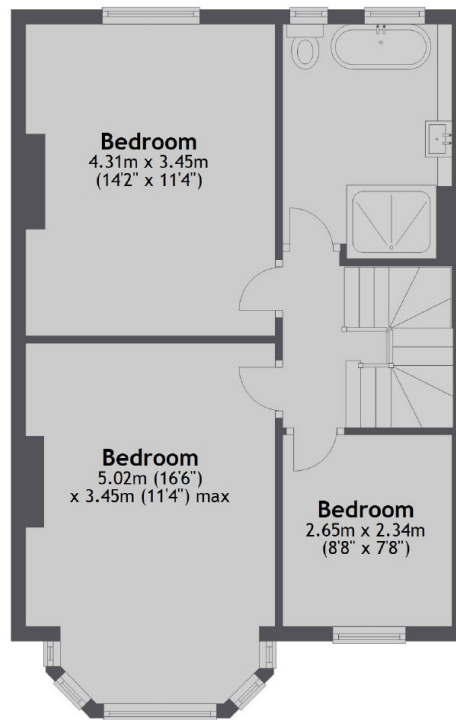


Thorney Hedge Road, London, W4

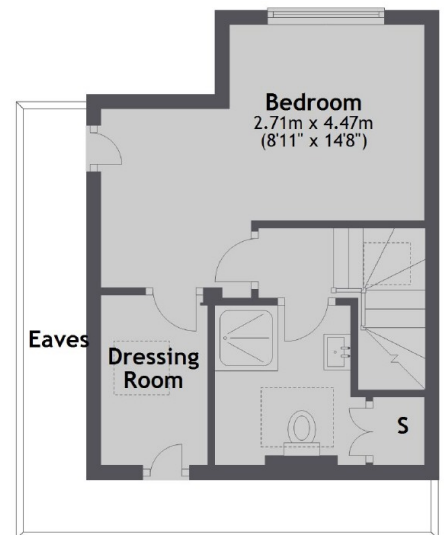
Ground Floor



First Floor



Second Floor



Total area: approx. 134.2 sq. metres (1444.1 sq. feet)

Contact

To arrange a viewing call our office on the number below or visit our website.



Energy Rating: D. We aim to make our particulars both accurate and reliable. However they are not guaranteed; nor do they form part of an offer or contract. If you require clarification on any points then please contact us, especially if you're traveling some distance to view. Please note that appliances and heating systems have not been tested and therefore no warranties can be given as to their good working order.