



Acton Lane, W4

£949,950

A semi-detached three bedroom family home set within a gated development with off-street parking. The property is in excellent condition and is being offered with no onward chain.

Broomcroft Court is located within half a mile of both Chiswick Park tube and South Acton station. It is also close to the shops and amenities of Chiswick High Road.

Features

- Three Bedrooms
- Three Bathrooms
- Gated Development
- Off-Street Parking
- Large Patio Garden
- No Onward Chain



Acton Lane, London, W4

This is the perfect house for a young family and is set within a secure gated development offering modern living in a secluded spot in the heart of Chiswick.

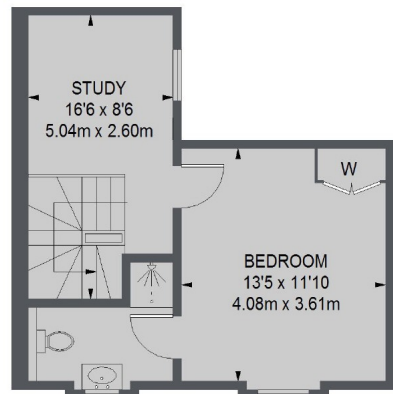
The ground floor consists of a bright reception room which connects through to a separate modern kitchen with plenty of room for dining and both rooms have double doors leading out to a sizeable patio garden.

Laid out over the first and second floors are three bedrooms, two of which have fitted wardrobes and their own en suite bathrooms and there is also a family bathroom. The second floor also benefits from an extra room that can be used as a study.

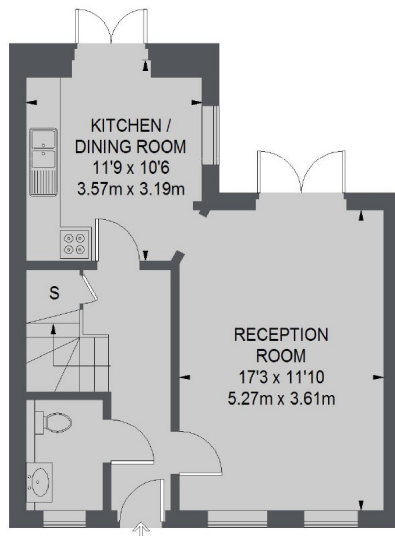




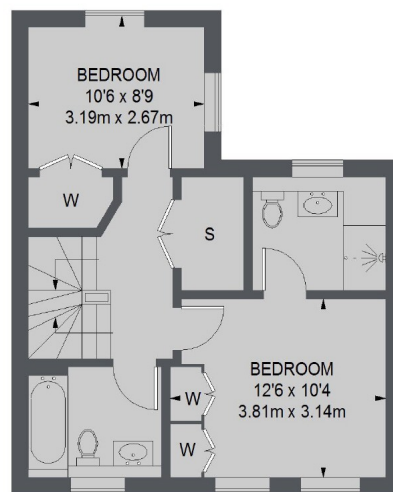
Acton Lane, London, W4



SECOND FLOOR



GROUND FLOOR



FIRST FLOOR

TOTAL APPROX. FLOOR AREA
1252 SQ. FT. (116.35 SQ. M.)

Contact

To arrange a viewing call our office on the number below or visit our website.



Energy Rating: C. We aim to make our particulars both accurate and reliable. However they are not guaranteed; nor do they form part of an offer or contract. If you require clarification on any points then please contact us, especially if you're traveling some distance to view. Please note that appliances and heating systems have not been tested and therefore no warranties can be given as to their good working order.