



Grange Road, W4

£1,999,950

Dexters





## Grange Road, London, W4

This spacious six bedroom period property is offered with a wealth of period features, no onward chain and 3,000 sq.ft of accommodation over four floors.

The ground floor has three reception rooms, double doors leading out to the west facing garden and a separate kitchen with an array of storage space and units. There are also stairs leading to the lower ground floor cellar and store room.

The first floor hosts three double bedrooms, a family bathroom with a four piece suite and an additional separate W.C. The top floor continues to impress with three further double bedrooms and another bathroom.

This house is full of character with wood flooring, bay windows and feature fireplaces in many of the rooms and offers really well-proportioned space throughout making this an ideal property for families.

Grange Road is located just off Turnham Green and under half a mile from both Chiswick Park and Gunnersbury underground stations.

### Features

Six Bedrooms  
Period Property  
No Onward Chain  
3,000 Sq. Ft  
West Facing Garden  
Cellar









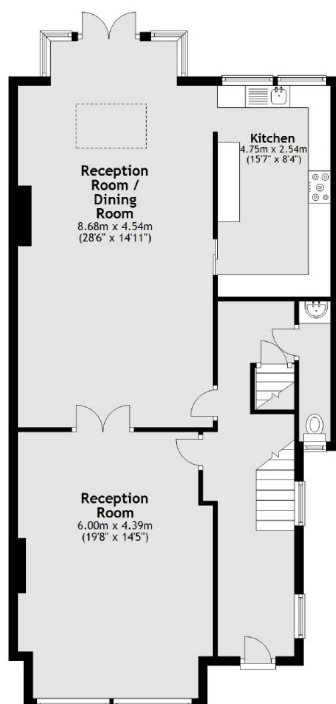




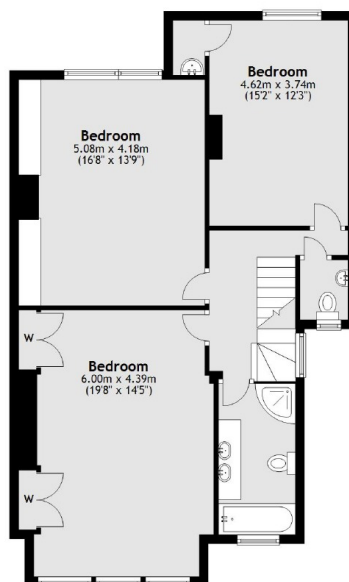


# Grange Road, London, W4

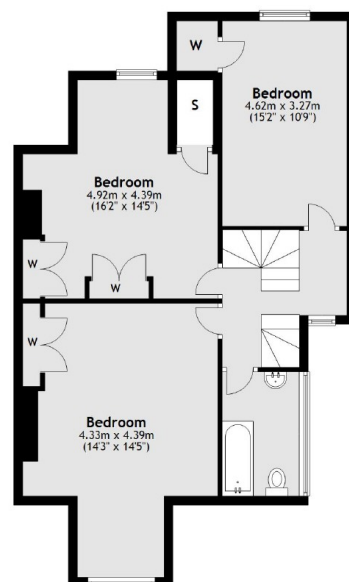
Ground Floor



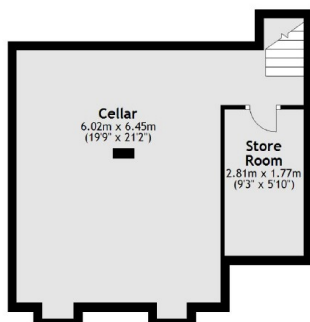
First Floor



Second Floor



Basement



Total area: approx. 275.2 sq. metres (2962.1 sq. feet)

**Dexters**

Chiswick  
388 Chiswick High Road,  
Chiswick, London, W4 5TF

Sales  
020 8995 4321

Energy Rating: E. We aim to make our particulars both accurate and reliable. However they are not guaranteed; nor do they form part of an offer or contract. If you require clarification on any points then please contact us, especially if you're traveling some distance to view. Please note that appliances and heating systems have not been tested and therefore no warranties can be given as to their good working order.

**RICS** Regulated  
Estate Agent  
and Letting Agent

[dexters.co.uk](http://dexters.co.uk)