



## Chiswick Staithe, W4

### £1,000,000

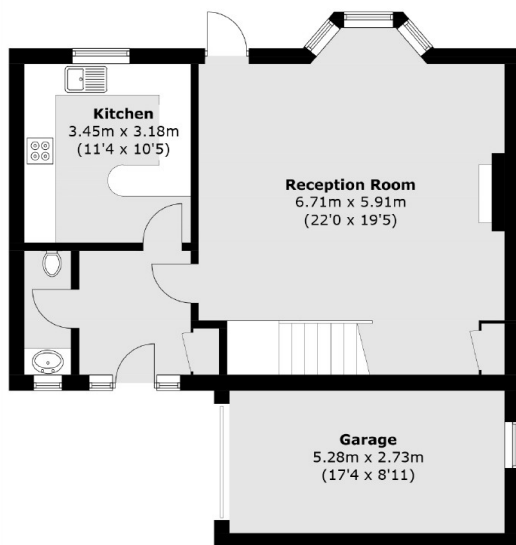
*\*Offers in excess of\** A unique three/four bedroom house in this sought-after riverside development. The house offers flexible living accommodation set over two floors with two reception rooms, private roof terrace, garage and well maintained communal gardens with direct access to the River Thames.

Chiswick Staithe lies just upstream of Chiswick Bridge, in the quiet and leafy Grove Park area of Chiswick, with its sports grounds, the Dukes Meadows golf course, and the finish line for the Oxford and Cambridge Boat Race. Good quality schools and other amenities are close by, and there are excellent rail connections from Chiswick Station in Grove Park, as well as frequent buses to the underground station at Turnham Green. Kew Gardens underground station is also within easy reach. Heathrow Airport and the M25 are 15 minutes away. The lively shops and restaurants of Chiswick High Road are less than 5 minutes drive away.

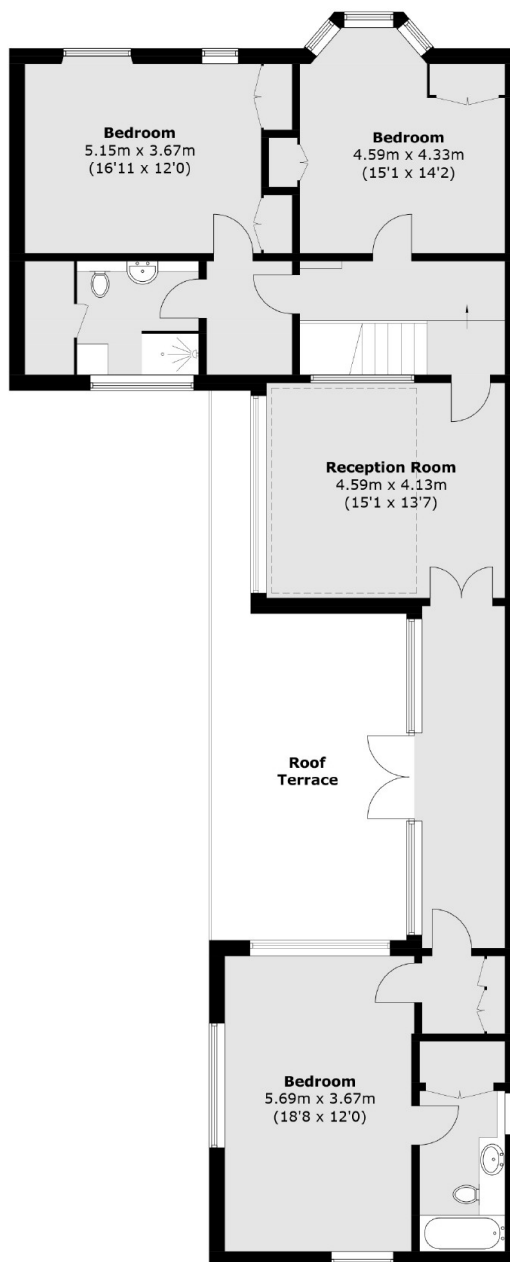
### Features

- Three Bedrooms
- Two Bathrooms
- Two Receptions
- Private Roof Terrace
- Direct Access to River Thames
- No Onward Chain

# Chiswick Staithe, London, W4



**Ground Floor**



**First Floor**

Total area (approx.): 175.6 sq. m (1,890.0 sq. ft)  
Garage area (approx.): 14.6 sq. m (157.1 sq. ft)  
Terrace area (approx.): 26.8 sq. m (288.4 sq. ft)