



Weston Road, W4
£1,100,000

Dexters



Weston Road, W4

Offers in excess of A bright and well-presented five bedroom Edwardian family home. The property has been extended with eat-in kitchen, ample storage and no onward chain.

The ground floor of the property has a through double reception and extended eat-in kitchen, leading onto the well maintained garden. On the first floor there is one family bathroom and three double bedrooms, the largest of which to the front has a striking bay window. To the top floor, there are two further double bedrooms and family bathroom. There is also potential to create a terrace from the rear bedroom, subject to the usual planning consents.

Weston Road is located within half a mile of Chiswick Park (District) and South Acton (Overground) underground stations. The property is also close to local amenities and bus links on Acton Lane and Chiswick High Road. Local schools and green spaces are also close by.

Features

- Edwardian Home
- Five Bedrooms
- Two Bathrooms
- Potential To Extend (STPP)
- Close To Transport
- No Onward Chain







Weston Road, London, W4

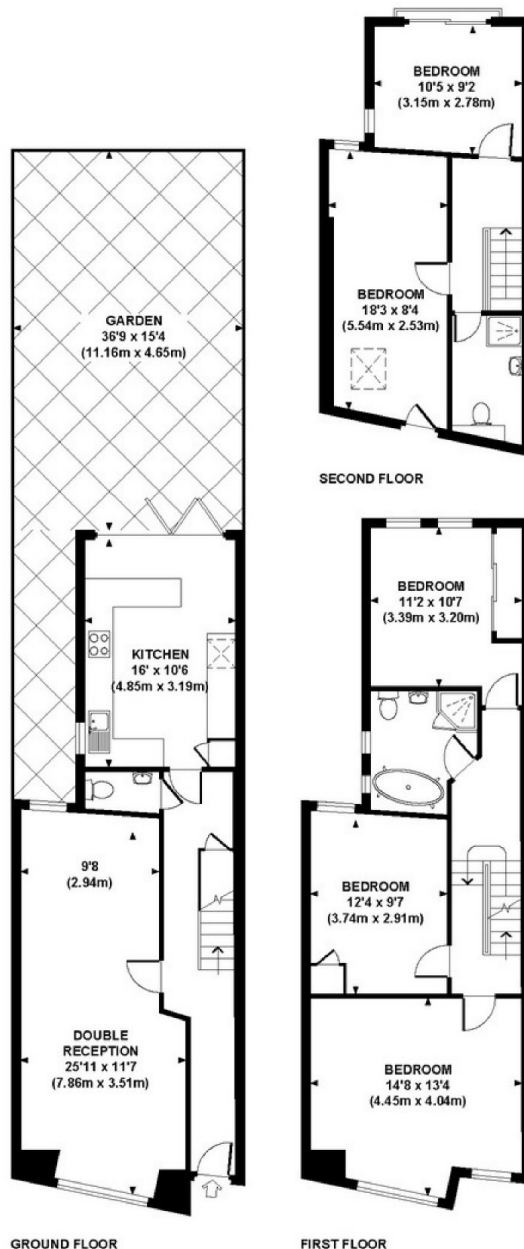
WESTON ROAD, W4

Approx. gross internal area

1504 Sq Ft. / 139.7 Sq M.

Representation of current layout.

Not to scale.



Dexters

Chiswick
388 Chiswick High Road
London
W4 5TF
Sales
020 8995 4321

Energy Rating: D. We aim to make our particulars both accurate and reliable. However they are not guaranteed; nor do they form part of an offer or contract. If you require clarification on any points then please contact us, especially if you're traveling some distance to view. Please note that appliances and heating systems have not been tested and therefore no warranties can be given as to their good working order.

 **RICS** | Regulated
Estate Agent
and Letting Agent

[dexters.co.uk](https://www.dexters.co.uk)