



Colinette Road, SW15

£4,450 Per calendar month

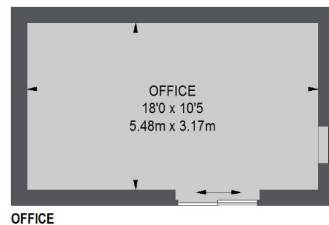
Finished with meticulous attention to detail, this semi detached four bedroom house is set over three floors and has a landscaped rear garden with an outhouse that has heating and power.

Colinette Road is a quiet street in West Putney within easy reach of good transport links to Putney High Street and its many shops, bars and restaurants.

Features

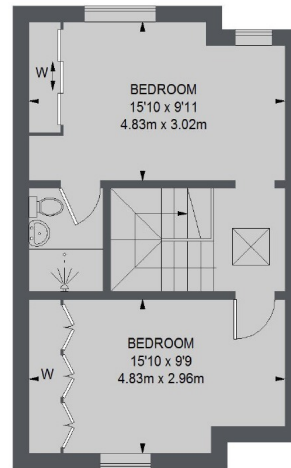
- Semi Detached House
- Outhouse With Power
- Wooden Flooring Throughout
- Custom Bathrooms
- Landscaped Rear Garden
- Off Street Parking

Colinette Road, London, SW15

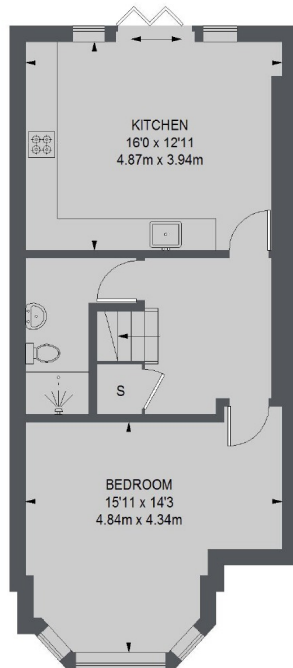


OFFICE

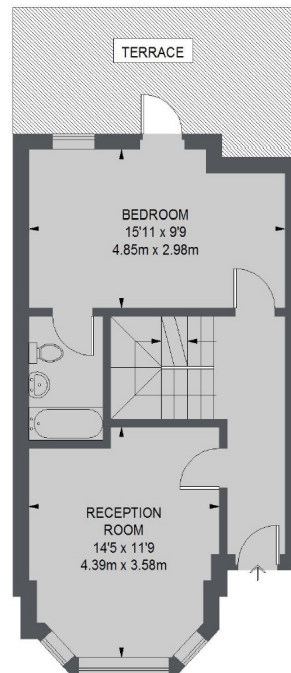
(Not Shown In Actual
Location / Orientation)



FIRST FLOOR



LOWER GROUND FLOOR



RAISED GROUND FLOOR

TOTAL APPROX. FLOOR AREA 1436 SQ. FT. (133.38 SQ. M.)
OFFICE = 190 SQ. FT. (17.64 SQ. M.)

Contact

To arrange a viewing call our office on
the number below or visit our website.



Energy Rating: C. We aim to make our particulars both accurate and reliable. However they are not guaranteed; nor do they form part of an offer or contract. If you require clarification on any points then please contact us, especially if you're traveling some distance to view. Please note that appliances and heating systems have not been tested and therefore no warranties can be given as to their good working order.