



Chartfield Avenue, SW15

£12,500 Per calendar month

Dexters



Chartfield Avenue, SW15

This seven bedroom, four bathroom, detached family home has been finished to a high standard. The large open plan fully fitted kitchen/dining room is very much at the heart of this home with access to the garden.

The ground floor has a great layout with a double length reception room that stretches from the front to the rear of the property with bi-fold doors leading to a large garden. An additional reception room creates a perfect family room/snug. The large open-plan fully fitted kitchen with space for dining also has access to a utility area and the garden. From the first floor landing you have access to the master bedroom with en-suite, there are a further two double bedrooms, one with en-suite. Stairs lead to the top floor where there are a further three bedrooms, a guest bathroom and two en-suite bathrooms.

The house has many luxuries of modern life including underfloor heating, air conditioning throughout and four secure off street parking spaces which all combine to make this the perfect size and location for a family.

Chartfield Avenue is well located, moments from an array of shops, bars, restaurants on Putney High Street and close by to Putney and East Putney Stations. Putney Heath is also within easy reach.

Features

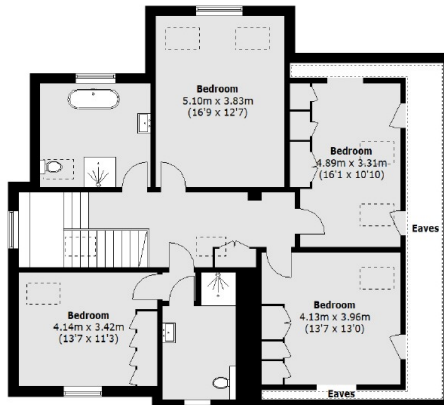
- Seven Bedrooms
- Four Bathrooms
- Air Conditioning Throughout
- Four Car Park Spaces
- Underfloor Heating
- Large Garden



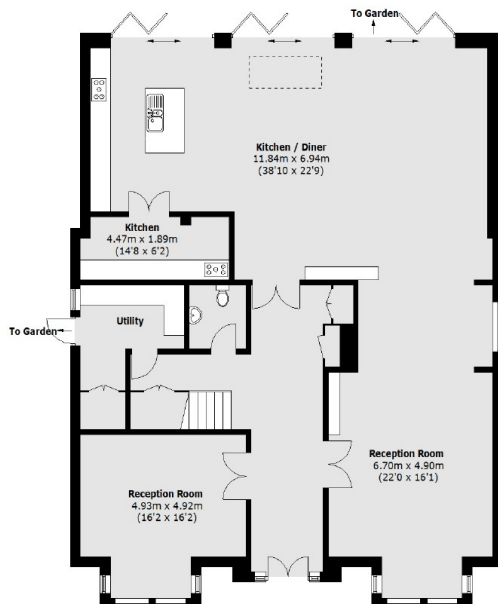




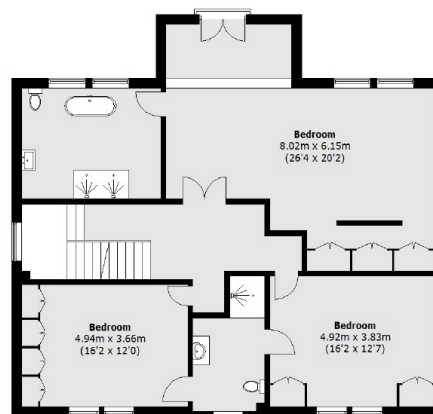
Chartfield Avenue, London, SW15



Second Floor



Ground Floor



First Floor

Total area (approx.): 4284 sq. m (46113 sq. ft)
(Excluding Eaves)

Dexters

Putney
176 Putney High Street
London
SW15 1RS
Lettings
020 8789 9090

Energy Rating: B. We aim to make our particulars both accurate and reliable. However they are not guaranteed; nor do they form part of an offer or contract. If you require clarification on any points then please contact us, especially if you're traveling some distance to view. Please note that appliances and heating systems have not been tested and therefore no warranties can be given as to their good working order.

 **RICS** | Regulated
Estate Agent
and Letting Agent

[dexters.co.uk](https://www.dexters.co.uk)