



## Felsham Road, SW15

£4,750 Per calendar month

**Dexters**



## Felsham Road, SW15

An exceptionally well presented double fronted Victorian home. With an open plan bespoke kitchen/dining room, four double bedrooms and a south west facing garden ideal for the growing family.

Felsham Road is an ideal location, a short walk to Lower Richmond Road with its bar, restaurants and coffee shops. There are a number of very good schools in the immediate location, with Putney High Street and mainline station a short walk away.

### Features

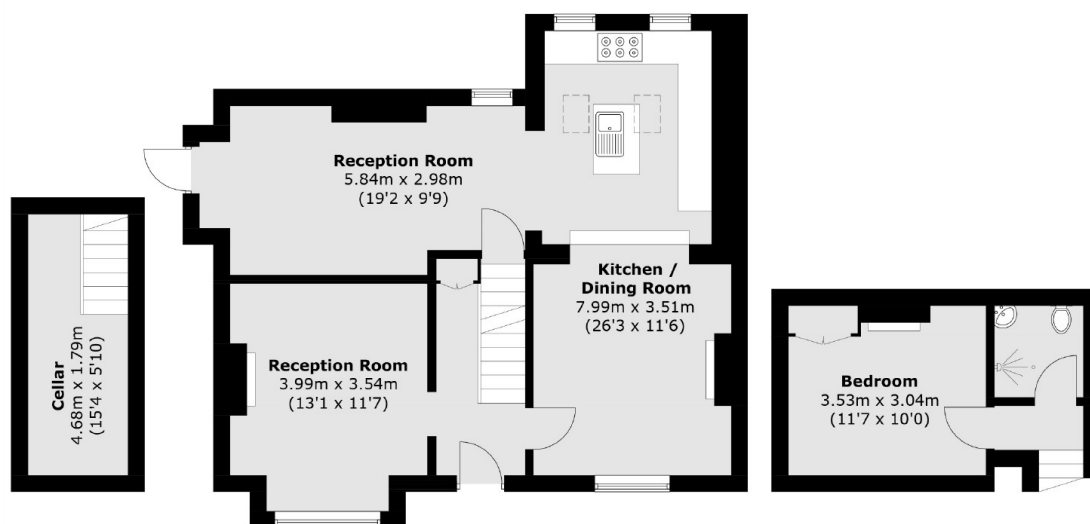
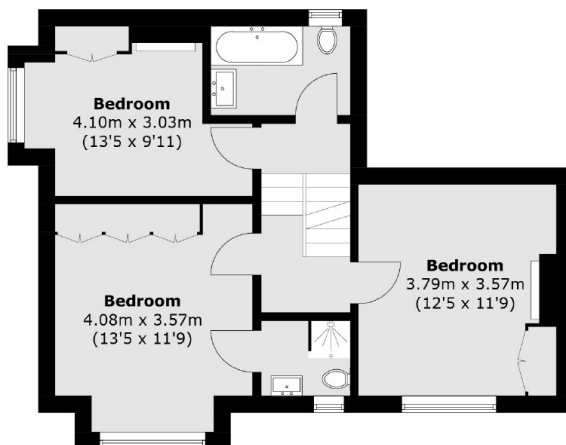
- End Of Terrace House
- Four Double Bedrooms
- Open Plan Kitchen
- Three Modern Bathrooms
- Off Street Parking
- South West Facing Garden







# Felsham Road, London, SW15



Cellar

Ground Floor

Second Floor

Total area (approx.): 132.9 sq. m (1,430.5 sq. ft)  
Cellar area (approx.): 8.5 sq. m (91.5 sq. ft)