



Radnor Terrace, W14

£6,100,000

A luxury four bedroom split level apartment situated on the ninth and tenth floors. This property is located within highly sought after development with concierge and five star facilities including a cinema room and swimming pool.

Edward House is located in Kensington and within walking distance to the shops and restaurants and the popular Holland Park. Kensington Olympia is also close by and you have easy access to the A4.

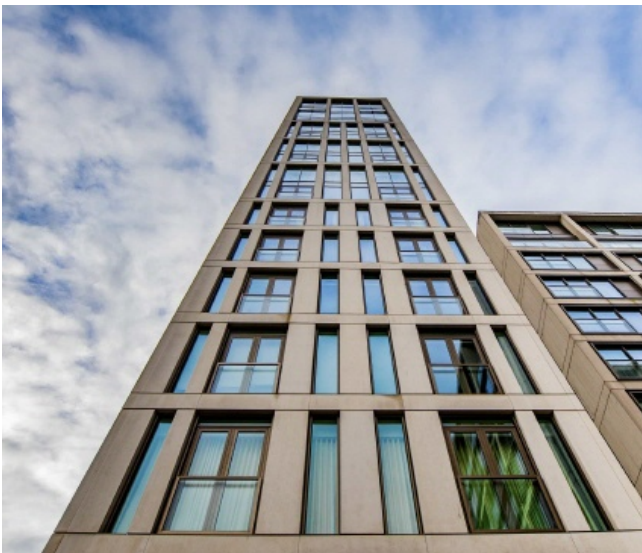
Features

- Underground Parking
- Concierge
- Luxury Fittings
- Prime Location
- Split Level
- Four Bedrooms



Radnor Terrace, London, W14

Oozing with lots of natural light and space this property has circa 2700 sq/ft of space with a large open plan living area with high end appliances and finishes throughout. There are four double bedrooms which three have en-suites and the principle room comes with a walk-in wardrobe. This property also comes with two allocated parking spots in the underground parking, access to superb swimming pool and gym facilities, cinema room and 24 hour concierge





Radnor Terrace, London, W14



Total area (approx.): 246.1 sq. m (2648.6 sq. ft)
External area : 3.4 sq. m (36.5 sq. ft)

Contact

To arrange a viewing call our office on the number below or visit our website.



Energy Rating: B. We aim to make our particulars both accurate and reliable. However they are not guaranteed; nor do they form part of an offer or contract. If you require clarification on any points then please contact us, especially if you're traveling some distance to view. Please note that appliances and heating systems have not been tested and therefore no warranties can be given as to their good working order.